



SUPER

DUKE 125

(A125Q2-2)

BK G S P BL S1

BK1 BL1 R1 BN1



A125Q2-2-2000A-2

07-0008

PARTS NO.	NO.	PARTS NO.	NO.	PARTS NO.	NO.
11000		13101-GY6-920	E16	16950-M9Q-000	F13
11100-GY6-900	E15	13111-384-000	E16	17000	
11102-187-003	E15	13201-GY6-900-H1	E16	1711A-V02-000	E03
11192-GY6-900	E15	1320A-V02-920	E16	17208-GR1-010	F15
11201-GY6-900	E15	13381-GY6-900-H1	E16	1720A-M70-000	F15
11202-GC7-300	E15	14000		17211-GY6-920	F15
11203-GC7-300	E15	14100-GY6-900	E04	17234-GY6-900	F15
11206-GY6-900	E12	14150-GY6-900	E04	17235-GY6-902	F15
1120A-V01-000	E15	14311-GY6-900	E16	17253-GY6-900	F15
1121A-V02-000	E02	14431-GY6-900-F2	E04	17255-GY6-900	F15
11221-GY6-900	E15	14450-GY6-900	E04	17257-GY6-900	F15
11331-GY6-900	E07	14452-GY6-900	E04	17370-KV7-700	F15
1133A-V02-000	E07	14510-GY6-900-E1	E05	17371-174-670	F15
11346-M9Q-000	F22	14520-GY6-901-M1	E05	17500-M41-000	F13
1134A-M70-010	E11	14523-M9Q-000	E05	17509-H12-000	F13
11381-GY6-940	E11	1453A-V02-000	E05	17550-H12-010	F22
11382-GY6-900	E11	14610-GY6-900	E05	17620-H12-000	F13
11383-GY6-900	E11	14711-GY6-900	E04	1768A-V02-000	F13
11385-GY6-900	E01	14721-GY6-900	E04	17910-GY6-920	F03
11394-GY6-900	E07	1475A-GN5-910-M1	E04	18000	
11395-GY6-920	E11	14771-GB4-680-E1	E04	18000-M70-000	F16
11396-GY6-900	E11	14775-MA6-000	E04	18292-GY1-610	F16
12000		14781-MA6-000-E1	E04	18318-V02-800	F16
12100-GY6-000-A	E06	15000		18815-GY6-950	F06
12100-GY6-900	E06	15100-GY6-900	E09	19000	
12191-GY6-900	E06	15131-GY6-900-H1	E16	19400-GY6-000	F22
12200-X07-000	E03	15133-GY6-900	E09	1940A-V02-000	F22
12202-GY6-900-AA	E03	15421-107-000	E07	19510-GY6-900	E08
12203-GY6-901-M1	E03	15426-GE1-920	E07	19613-GY6-900	E01
12209-MA6-003	E04	1565A-V02-000	E07	1961A-M62-000	E01
12211-GY6-900	E03	15711-GY6-900	E09	1962A-H12-000	E01
12237-GB4-681	E03	16000		1963A-V02-920	E01
12245-GB4-681-E1	E03	16011-382-004	E17	21000	
12251-GY6-900-E1	E03	16012-GY6-900	E17	21301-GY6-921	E14
1231A-X07-000	E02	16013-KN7-911	E17	21395-GY6-900	E14
1236A-V02-000	E07	16046-GY6-900	E17	22000	
12391-GY6-943	E02	1610A-V02-000	E17	22101-GY6-940	E13
13000		16201-GY6-900	E03	22102-GY6-900-Z1	E12
13000-GY6-920	E16	16211-GY6-900	E03	22105-GY6-900	E12
13010-V02-900	E16	1691A-V02-000	F13	22110-V02-000	E12

PARTS NO.	NO.	PARTS NO.	NO.	PARTS NO.	NO.
22112-GY6-901-M1	E12	30700-GY6-000	F21	35200-M9Q-000	F03
22121-GY6-920-A	E12	31000		35340-GY6-920	F03
22131-GY6-900	E12	31100-M92-000	E08	35340-M70-000	F03-1
22132-KN2-900-A	E12	31110-M92-000	E08	35400-H08-000	F21
22300-GY6-901	E13	31120-M92-000	E08	35850-M70-000	F21
22401-GY6-901	E13	31200-V02-000	E10	37000	
22804-GB2-000	E13	31600-KBN-920	F21	37200-M70-000	F02
23000		32000		37200-M70-020	F02
23010-M70-010	E13	32100-M62-000	F21	37211-GY6-000	F02
23200-GY6-900	E13	32411-M70-000	F14	37800-H12-010	F13
23220-GY6-920	E13	32412-GY6-920	F14	37801-GA7-700	F13
23225-GC8-003	E13	32961-GY6-900	E07	37802-GA7-700	F13
23226-GC8-003	E13	33000		38000	
23411-GY6-920	E14	33100-M70-020	E18	38110-T54-000	F21
23420-GY6-900	E14	33140-M70-000	F19	38300-M34-010	F05-1
23431-GY6-920	E14	33240-M70-000	F19	3877A-V02-000	E17
23432-GY6-900	E14	33600-M70-000	F20	3877A-V02-000	F13
2343A-V02-920	E14	33602-M70-000	F20	42000	
28000		33650-M70-000	F20	42601-H09-020-GR	F11
28101-GY6-900	E10	33652-M70-000	F20	43000	
28102-GY6-900	E10	33700-M70-010	F20	4314A-V02-000	F11
28110-M9Q-000	E10	33702-M70-000	F20	43410-V02-900	F11
28120-V02-000	E10	33741-P1A-000	F20	43415-GY6-900	F11
28125-426-000	E10	34000		43416-GY6-900	F11
28126-323-000	E10	34901-M42-000	E18	43450-GY6-920	F03
2812A-V02-000	E10	34903-GY6-631	F19	43472-V02-000	F11
28221-GY6-900	E12	34903-M42-000	E18	43536-MG9-951-M1	F11
28223-KG8-000	E12	34905-B06-000-E	E18	44000	
2823A-V02-920	E12	34905-GM9-003	F20	44301-H09-000	F10
2823A-V02-920	E12-1	34906-268-600	F20	44311-H09-000	F10
28242-GA7-000	E12	34908-GA7-701	F02	44313-GM9-710	F09-2
28250-GY6-900	E12	34908-GA7-701	F20	44601-H09-020-GR	F10
28254-GA7-003	E12	34908-MB9-871	F02	44620-H09-000	F10
28254-KG8-910	E12	35000		44800-GM9-711	F10
28281-KG8-901	E12	35010-M70-010	F21	44830-H08-010	F02
28282-GA7-000	E12	35100-H12-000	F21	45000	
28300-GY6-900	F17	35150-M38-000	F03	45050-H13-000	F09-2
30000		35160-M9Q-000	F03	45104-GM9-003	F09-2
30410-M70-000	F14	35170-M9Q-000	F03	45105-H13-000-AC	F09-2
30510-GY6-900	F21	35180-M9Q-000	F03	45120-E60-000	F11

PARTS NO.	NO.	PARTS NO.	NO.	PARTS NO.	NO.
45121-M9Q-000	F10	5120A-H12-000-LK	F09	61102-H12-000-KA	F06
45126-H09-010	F03-1	5120A-H12-000-NV	F09	64000	
45131-GM9-710	F09-2	51334-KV7-670	F09	64301-H12-000-AE	F05
45133-028-000	F11	51335-001-000	F09	64301-H12-000-BJ	F05
4543A-H09-000	F09	51350-H12-000	F09	64301-H12-000-CO	F05
45500-M70-000	F03-1	51450-H12-000	F09	64301-H12-000-HY	F05
4550A-M70-000	F03-1	52000		64301-H12-000-KV	F05
45517-GWO-751	F03-1	52400-M70-000	F18	64301-H12-000-SQ	F05
45530-MN9-305	F03-1	53000		64304-H17-001-GK	F05-1
50000		5310A-H12-000	F04	64305-H12-000	F05-1
50100-M70-011	F22	53125-M9Q-000	F04	64307-M9Q-800	F22
50300-KV7-000	F09-1	53129-H12-000	F21	64308-H12-010-GK	F05-1
50301-M9Q-000	F09	53140-M9Q-000	F03	6430A-M62-010-GK	F05-1
50306-M9Q-000	F09	53166-M9Q-000	F03	6430B-M62-000-KQ	F05
50315-H12-000	F05-1	53172-GY6-920	F03	6430B-M62-000-LJ	F05
50326-GY6-900-GK	F07	53172-V02-900	F03	6430B-M62-000-NU	F05
50326-GY6-900-GK	F14	53173-GY6-920	F03	6430B-M62-000-SQ	F05
5032A-V02-000	F14	53175-H09-020	F03-1	6430F-M62-000-KQ	F05
5035A-M70-000	F22	53178-V02-800	F03	6430F-M62-000-LJ	F05
50502-GY6-900	F17	5317B-M70-000	F03	6430F-M62-000-NU	F05
50503-GY6-900	F17	53206-H12-000-GK	F04	6430F-M62-000-SQ	F05
50504-M62-000	F17	5320A-H21-000-AE	F04	6430G-M70-000-AE	F05-1
50505-GY6-920	F17	5320A-H21-000-BJ	F04	6430G-M70-000-BJ	F05-1
5050A-H12-900	F17	5320A-H21-000-CO	F04	6430G-M70-000-HY	F05-1
50530-M70-000	F17	5320A-H21-000-KQ	F04	6430G-M70-000-KV	F05
50542-M70-000	F17	5320A-H21-000-KV	F04	6430G-M70-000-SQ	F05
50542-M70-000	F17	5320A-H21-000-LJ	F04	64310-H12-000-GK	F07
50613-M9Q-000	F22	5320A-H21-000-NU	F04	64313-H12-001	F07
50620-M41-000	F07	5320A-H21-000-SQ	F04	64320-H12-000-GK	F07
50621-H12-000	F07	53211-M9Q-000	F09	75000	
51000		53212-250-010	F09	75581-H12-000	F05-1
51105-H12-000	F09	53214-250-000	F09	75581-M9Q-000	F08-3
5110A-H12-000-GA	F09	53215-250-000	F09	77000	
5110A-H12-000-GK	F09	61000		77100-H12-000	F12
5110A-H12-000-KA	F09	61100-H12-000-GA	F05	77107-H12-000	F07
5110A-H12-000-LK	F09	61100-H12-000-GK	F05	77232-H12-010	F08-3
5110A-H12-000-NV	F09	61100-H12-000-KA	F05	77233-GY6-900	F05-1
5120A-H12-000-GA	F09	61100-H12-000-LK	F05	77239-GY6-003	F08-3
5120A-H12-000-GK	F09	61100-H12-000-NV	F05	7723A-M9Q-000	F08
5120A-H12-000-KA	F09	61101-H12-000-KA	F06	80000	

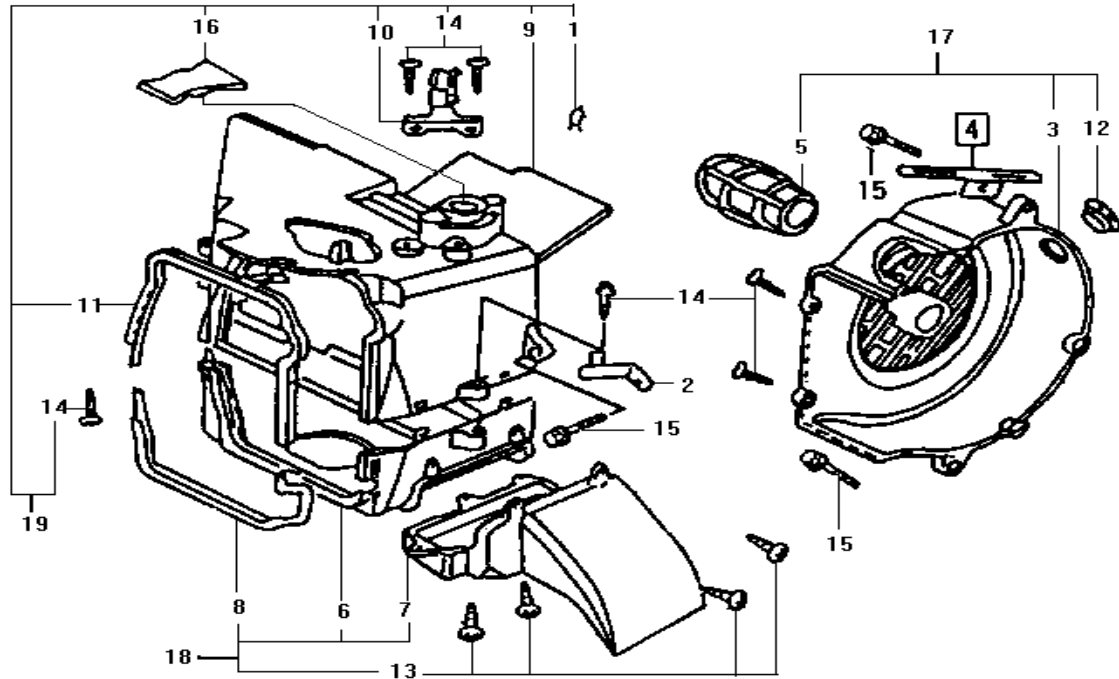
PARTS NO.	NO.	PARTS NO.	NO.	PARTS NO.	NO.
80102-M9Q-000	F22	8350G-M70-000-KV	F08-1	83751-H12-000-GK	F08-3
8010A-H12-000	F22	8350Z-M62-000-KQ	F08-1	83751-H12-000-KA	F08-3
80152-H12-000-GK	F07	8350Z-M62-000-LJ	F08-1	83751-H12-000-LK	F08-3
81000		8350Z-M62-000-NU	F08-1	83751-H12-000-NV	F08-3
81132-H12-000-GK	F07	8350Z-M62-000-SQ	F08-1	87000	
81133-H12-000	F07	8350Z-M62-000-SQ	F08-2	87123-G22-000-T1	F04
81201-M70-000-AE	F12	83601-H12-000-GA	F08-1	87123-G22-000-T2	F04
81201-M70-000-BJ	F12	83601-H12-000-GK	F08-1	87124-M62-000-T1	F05-1
81201-M70-000-CO	F12	83601-H12-000-KA	F08-1	87124-M62-000-T1	F05-1
81201-M70-000-HY	F12	83601-H12-000-LK	F08-1	87124-M62-000-T2	F05-1
81201-M70-000-KV	F12	83601-H12-000-NV	F08-1	87124-M62-000-T2	F05-1
8120A-H12-000-AE	F12	8360G-M70-000-AE	F08-2	87126-M62-000-T1	F08-3
8120A-H12-000-BJ	F12	8360G-M70-000-BJ	F08-2	87126-M62-000-T2	F08-3
8120A-H12-000-CO	F12	8360G-M70-000-CO	F08-2	88000	
8120A-H12-000-HY	F12	8360G-M70-000-HY	F08-2	88110-T40-000	F03
8120A-H12-000-KQ	F12	8360G-M70-000-KV	F08-2	88120-T40-000	F03
8120A-H12-000-KV	F12	8360G-M70-000-SQ	F08-2	89000	
8120A-H12-000-LJ	F12	8360Z-M62-000-KQ	F08-1	89010-GY6-900	F23
8120A-H12-000-NU	F12	8360Z-M62-000-LJ	F08-1	90000	
8120A-H12-000-SQ	F12	8360Z-M62-000-NU	F08-2	90001-GHB-660	E05
8120B-H12-000-KQ	F12	83630-H12-000	F08	90001-GHB-680	E14
8120B-H12-000-LJ	F12	8365A-M70-000-AE	F08-2	90001-GHB-700	E14
8120B-H12-000-NU	F12	8365A-M70-000-BJ	F08-2	90001-GHB-710	E11
8120B-H12-000-SQ	F12	8365A-M70-000-CO	F08-2	90001-GHB-760	E11
8126A-M62-000	F08	8365A-M70-000-HY	F08-2	90005-KW1-900	E05
81270-H12-010	F22	8365A-M70-000-KQ	F08-2	90012-333-000	E04
8127A-H12-000	F22	8365A-M70-000-KV	F08-2	90031-GY6-900	E15
83000		8365A-M70-000-LJ	F08-2	90032-GY6-900	E15
83501-H12-000-GA	F08-1	8365A-M70-000-NU	F08-2	90103-KN8-000	E14
83501-H12-000-GK	F08-1	8365A-M70-000-SQ	F08-2	90104-KS4-000	F09-1
83501-H12-000-KA	F08-1	83660-H12-000-AE	F08-3	90105-GY6-900	F22
83501-H12-000-LK	F08-1	83660-H12-000-BJ	F08-3	90105-KR3-000	F10
83501-H12-000-NV	F08-1	83660-H12-000-CO	F08-2	90106-GN5-900	F04
83504-H12-010	F08-3	83660-H12-000-HY	F08-3	90106-GY6-900	F22
83505-H12-010	F08-3	83660-H12-000-KQ	F08-2	90108-G03-000	F17
83506-H12-010	F08-3	83660-H12-000-KV	F08-3	90111-147-000	F07
8350G-M70-000-AE	F08-1	83660-H12-000-LJ	F08-2	90111-162-000B	F05-1
8350G-M70-000-BJ	F08-1	83660-H12-000-NU	F08-2	90111-162-000B	F06
8350G-M70-000-CO	F08-1	83660-H12-000-SQ	F08-2	90111-162-000B	F08
8350G-M70-000-HY	F08-1	83751-H12-000-GA	F08-3	90111-162-000B	F20

PARTS NO.	NO.	PARTS NO.	NO.	PARTS NO.	NO.
90111-162-000B	F22	90452-KG8-000	E12	92900-06050-0E	E03
90111-GC3-000	F09-1	90461-MF2-710	E06	93000	
90114-166-006	F03	90465-MC4-000	E03	93201-08032-0A	F18
90114-166-006	F03-1	90474-333-000	E14	93500-04012-0H	F03-1
90114-V02-000	F15	90508-GC8-000	F09-1	93700-05018-0A	F10
90115-G02-000	F07	90545-300-000	F03-1	93891-05010-00	F15
90118-471-000	F09-1	90601-GY6-900	E12-1	93891-05016-07	F08-3
90118-GM9-741	F09-1	90605-166-720	E13	93892-04008-00	E17
90118-T15-000	F08-3	90652-GY6-900	F15	93892-05012-08	E17
90121-GY6-900	F22	90701-HB6-010	E10	93903-24310	F08-3
90136-MC7-000	F16	90701-HB6-010	E16	93903-24320	F04
90145-MS9-611	F03-1	90754-M9Q-000-M2	F10	93903-24320	F05-1
90164-028-000	F21	90912-M9Q-000-M1	F10	93903-24320	F06
90201-GY6-900	E10	91000		93903-24320	F07
90201-PB8-000	E12	91001-GY6-900-M1	E13	93903-24320	F19
90201-PB8-000	E13	91002-GA7-701	E13	93903-24380	F15
90202-187-000	E13	91002-GY6-303	E16	93903-25220	E18
90206-001-000	E04	91003-KS4-003	E15	93903-25320	F07
90301-693-000	F08	91009-GE0-003-M1	E15	93903-25320	F14
90301-GY6-900	F16	91101-179-710	E10	93903-25320	F22
90302-GY6-900	F07	91101-GY6-901-M1	E16	93903-25480	F15
90302-GY6-900	F14	91104-GY6-901-E1	E10	93904-35380	E01
90302-V02-000	F05-1	91201-GY6-903-M2	E07	94000	
90302-V02-000	F06	91201-GY6-903-M2	E15	94001-05000-0S	F03
90302-V02-000	F07	91202-KJ9-003	E14	94002-GC8-000	F09-1
90304-GW0-901-M1	F04	91211-KN7-900	E13	94050-05080	F22
90304-GW0-901-M1	F22	91255-GE0-003	E15	94050-06000	E03
90305-KBN-902-M2	F07	91258-KM1-004	F10	94050-06000	E09
90306-GW0-901-M1	F10	91301-053-000	E15	94050-06000	F03-1
90309-KF0-003	E15	91302-001-020	E07	94050-06000	F08
90309-KF0-003	F09-1	91305-028-158	E03	94050-06080	F07
90309-KF0-003	F11	91306-105-690	E05	94050-06080	F13
90309-KF0-003	F17	91307-035-000	E07	94050-06080	F20
90320-GC3-000	F08-3	91351-642-000	E13	94050-06080	F21
90381-GZ5-000	F08	91352-KG8-831	F11	94050-06080	F22
90403-GY6-900	E10	92000		94050-08000	E03
90440-M9Q-000	E08	92101-05012-0A	E08	94050-12000	E08
90440-M9Q-000	E12	92101-05020-0A	F21	94101-10700	F17
90440-M9Q-000	E13	92201-06022-0G	F17	94301-08140	E07
90451-155-000	E12	92900-06018-0B	E03	94301-08140	E11

PARTS NO.	NO.	PARTS NO.	NO.	PARTS NO.	NO.
94301-08140	E14	96001-06025-00	E02		
94301-08140	E15	96001-06025-00	E09		
94301-10160	E03	96001-06032-00	E07		
94301-10160	E06	96001-06040-00	E07		
94510-20000	E14	96001-06050-00	E15		
94520-28000	E13	96001-06050-00	F17		
94601-15000	E16	96001-06095-00	E07		
95000		96001-06100-00	E03		
95002-02070-00	E17	96001-06100-00	E07		
95002-02070-00	F13	96001-06110-00	E07		
95002-02080	E17	96100-60020-00	E15		
95002-02080	F13	96100-62020-00	E14		
95002-02080	F22	96100-62030-00	E14		
95002-40850-08	E02	96100-62043-00	E14		
95002-41050-04	F15	96211-05000	F09-1		
95014-71402	F17	96211-08000	F09-1		
95014-72204	F17	96220-30085	E12-1		
95015-32001	F11	98000			
95015-42000	F11	98200-10700	F14		
95701-06012-00	E06	98200-10700	F21		
95701-06012-00	F21	DRIVE BELT			
95701-06012-08	F07	1B01GY601	E13		
95701-06012-08	F12	CHAIN			
95701-06012-08	F22	1C14401-V02-000	E05		
95701-06012-08	F22	1C15141-V02-000-M1	E09		
95701-06016-00	F21	SPARK PLUG			
95701-06032-00	F11	1PCR7HSA-3	E03		
95701-08012-00	F21	TIRE			
95701-08016-00	F21	1T0135108-308	F10		
95801-10035-08	F18	1T0135108-308	F11		
95900-06022-00	F03-1	BATTERY			
96000		1Y01GY601-Y	F14		
96001-06012-00	E09				
96001-06012-00	F17				
96001-06014-00	E12-1				
96001-06016-00	E10				
96001-06018-00	E08				
96001-06020-00	E08				
96001-06020-00	F03				
96001-06025-00	E01				

COLOR PARTS INDEX FOR " SUPER DUKE 125 "

N O	MODEL		A125Q2-2-BL		A125Q2-2-S1		A125Q2-2-BK1	
	BASIC COLOR		SILVER		SILVER		BLACK	
	CODE		BU-4035S	BL	S-880S	SQ	BK-0406S	KV
	Parts Number	Description	Basic Color	Code	Basic Color	Code	Basic Color	Code
1	42601-H09-020	RR. WHEEL CAST	GY-1406S	GR	GY-1406S	GR	GY-1406S	GR
2	44601-H09-020	RR. WHEEL CAST	GY-1406S	GR	GY-1406S	GR	GY-1406S	GR
3	50326-M9Q-000	BATTERY COVER	GY-426U	GK	GY-426U	GK	GY-426U	GK
4	5110A-H12-000	R PIVOT ARM COVER ASS'Y	GY-426U	GK	GY-426U	GK	GY-426U	GK
5	5120A-H12-000	L PIVOT ARM COVER ASS'Y	GY-426U	GK	GY-426U	GK	GY-426U	GK
6	5320A-H21-000	FR HANDLE COVER ASSY	BU-4035S	CO	S-880S	SQ	BK-0406S	KV
7	53206-H12-000	RR. HANDLE COVER ASSY	GY-426U	GK	GY-426U	GK	GY-426U	GK
8	61100-H12-000	FR FENDER	GY-426U	GK	GY-423U	GA	GY-426U	GK
9	61101-H12-000	FR INNER FENDER A	BK-001U	KA	BK-001U	KA	BK-001U	KA
10	61102-H12-000	FR INNER FENDER B	BK-001U	KA	BK-001U	KA	BK-001U	KA
11	64301-H12-000	FR COVER	BU-4035S	CO	S-880S	SQ	BK-0406S	KV
12	64308-H12-010	INNER BOX LID	GY-426U	GK	GY-426U	GK	GY-426U	GK
13	6430A-M70-000	INNER BOX ASS'Y	GY-426U	GK	GY-426U	GK	GY-426U	GK
14	6430G-M70-000	FR. COVER LID ASSY	BU-4035S	CO	S-880S	SQ	BK-0406S	KV
15	64310-H12-000	FLOOR PANEL	GY-426U	GK	GY-426U	GK	GY-426U	GK
16	64320-H12-000	FLOOR MAT	GY-426U	GK	GY-426U	GK	GY-426U	GK
17	80152-H12-000	CENTER COVER	GY-426U	GK	GY-426U	GK	GY-426U	GK
18	81201-M70-000	RR. CARRIER COVER SET	BU-4035S	CO	S-880S	SQ	BK-0406S	KV
19	8120A-H12-000	RR. CARRIER SET	BU-4035S	CO	S-880S	SQ	BK-0406S	KV
20	83501-H12-000	R. SIDE COVER	GY-426U	GK	GY-426U	GK	GY-426U	GK
21	8350G-M70-000	R. BODY COVER ASSY	BU-4035S	CO	S-880S	SQ	BK-0406S	KV
22	83601-H12-000	L. SIDE COVER	GY-426U	GK	GY-426U	GK	GY-426U	GK
23	8360G-M70-000	L. BODY COVER ASSY	BU-4035S	CO	S-880S	SQ	BK-0406S	KV
24	8365A-M70-000	RR. CENTER UP COVER A ASS	BU-4035S	CO	S-880S	SQ	BK-0406S	KV
25	83660-H12-000	RR. CENTER UP COVER B	BU-4035S	CO	S-880S	SQ	BK-0406S	KV
26	83751-H12-000	RR. CENTER COVER	GY-426U	GK	GY-426U	GK	GY-426U	GK
27	87123-G22-000	SYM STRIPE	TYPE2	T2	TYPE2	T2	TYPE1	T1



MODEL(S)
A125Q2-2

BLOCK NO. A-1

CHANGE
DATE

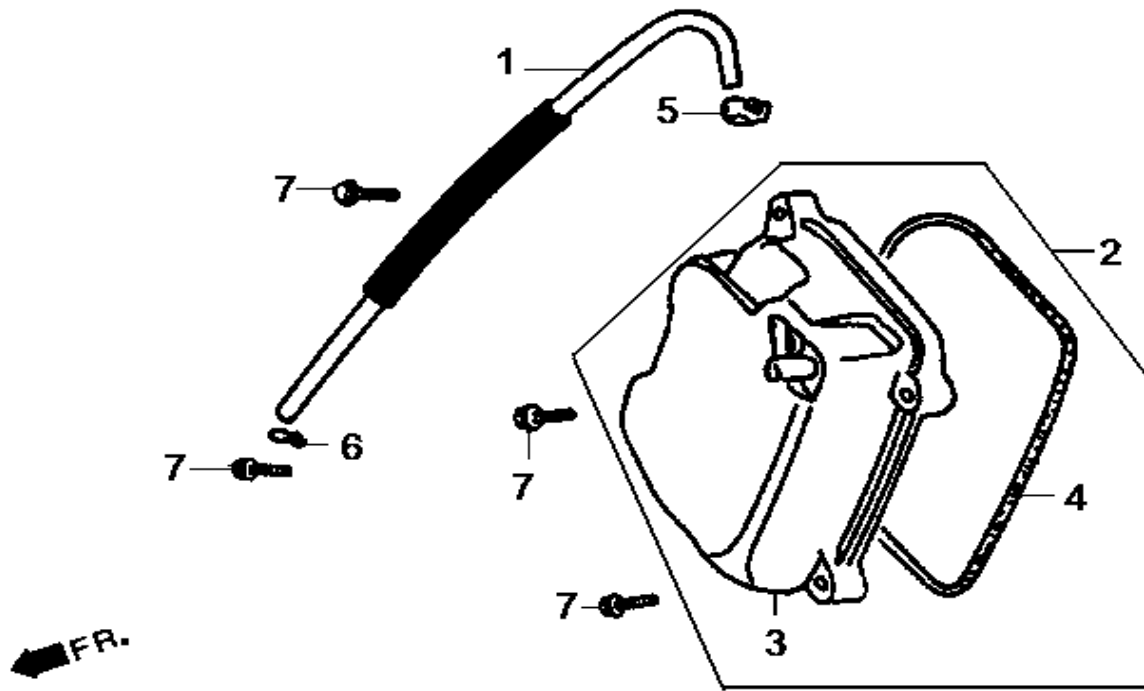
A
P
P
L
Y

Q
T
Y
R
E
Q

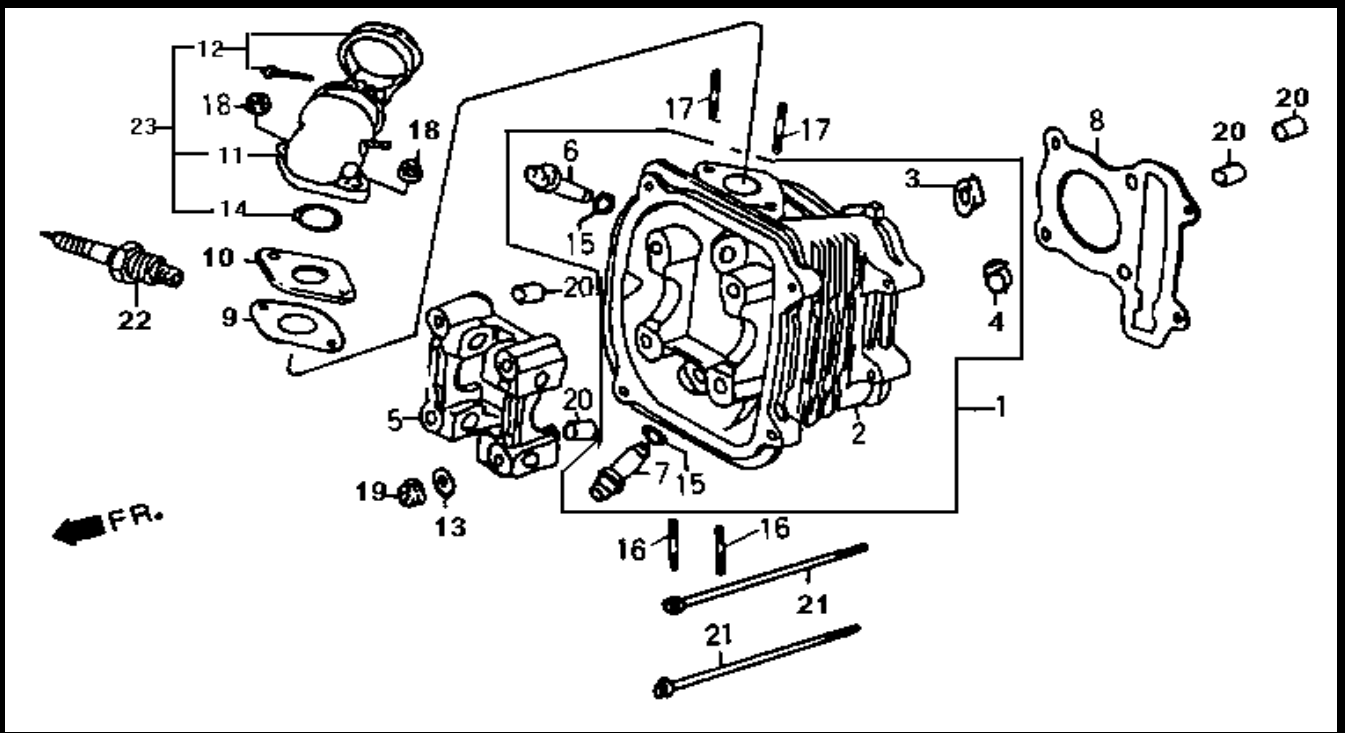
DESCRIPTION

PARTS NUMBER

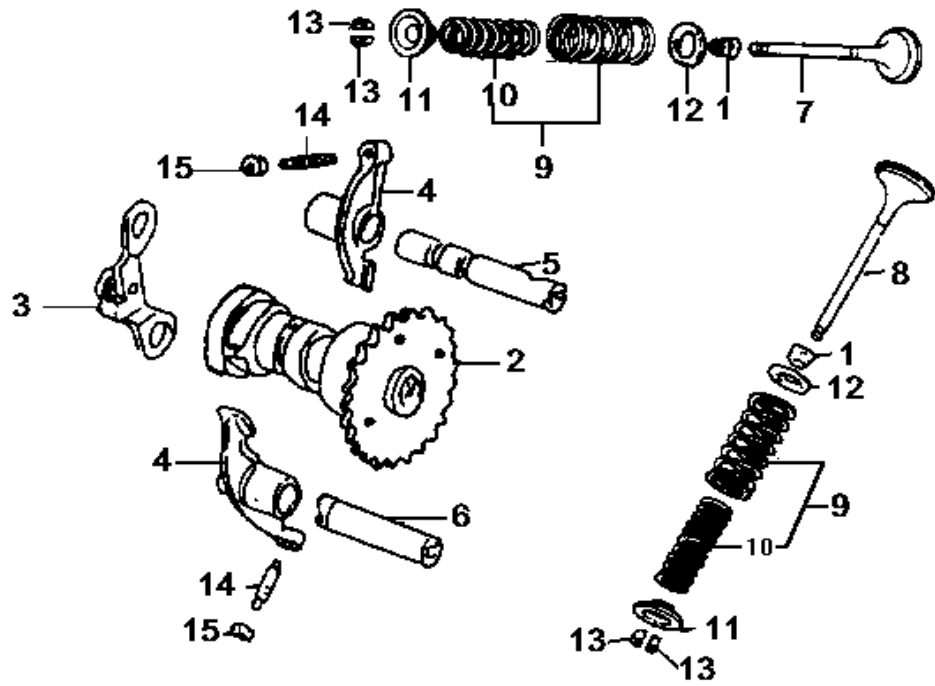
2.Carb drian tube clamp	11385-GY6-900			1
4.Start motor cord clamber	19613-GY6-900			1
14.tapping screw 5x16	93904-35380			1
15.flange sh bolt 6x25	96001-06025-00			1
17.Fan cover assy	1961A-M62-000			1
18.Shroud A assy	1962A-H12-000			1
19.Shroud B assy	1963A-V02-920			1



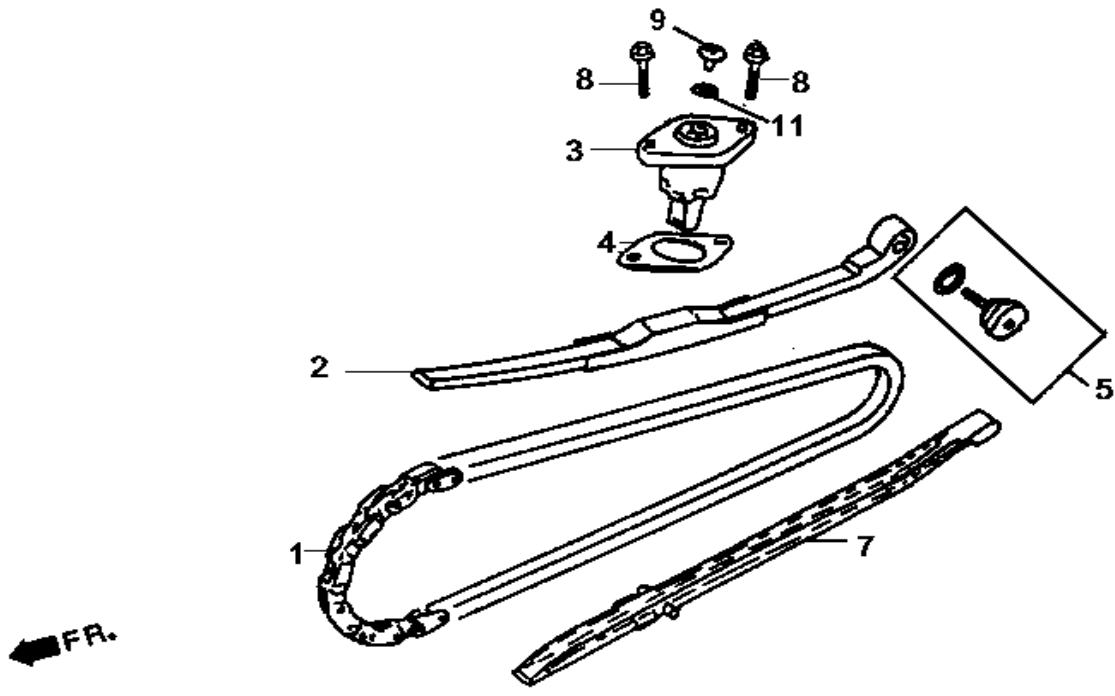
MODEL(S) A125Q2-2			A P P L Y	Q T Y R E Q
BLOCK NO. A-1	CHANGE DATE			
DESCRIPTION	PARTS NUMBER			
1.Breather tube	1121A-V02-000			1
2.Head cover assy	1231A-X07-000			1
4.Head cover gasket	12391-GY6-943			1
5.Tube clamo d8.5	95002-40850-08			1
7.Flange bolt sh 6x25	96001-06025-00			1



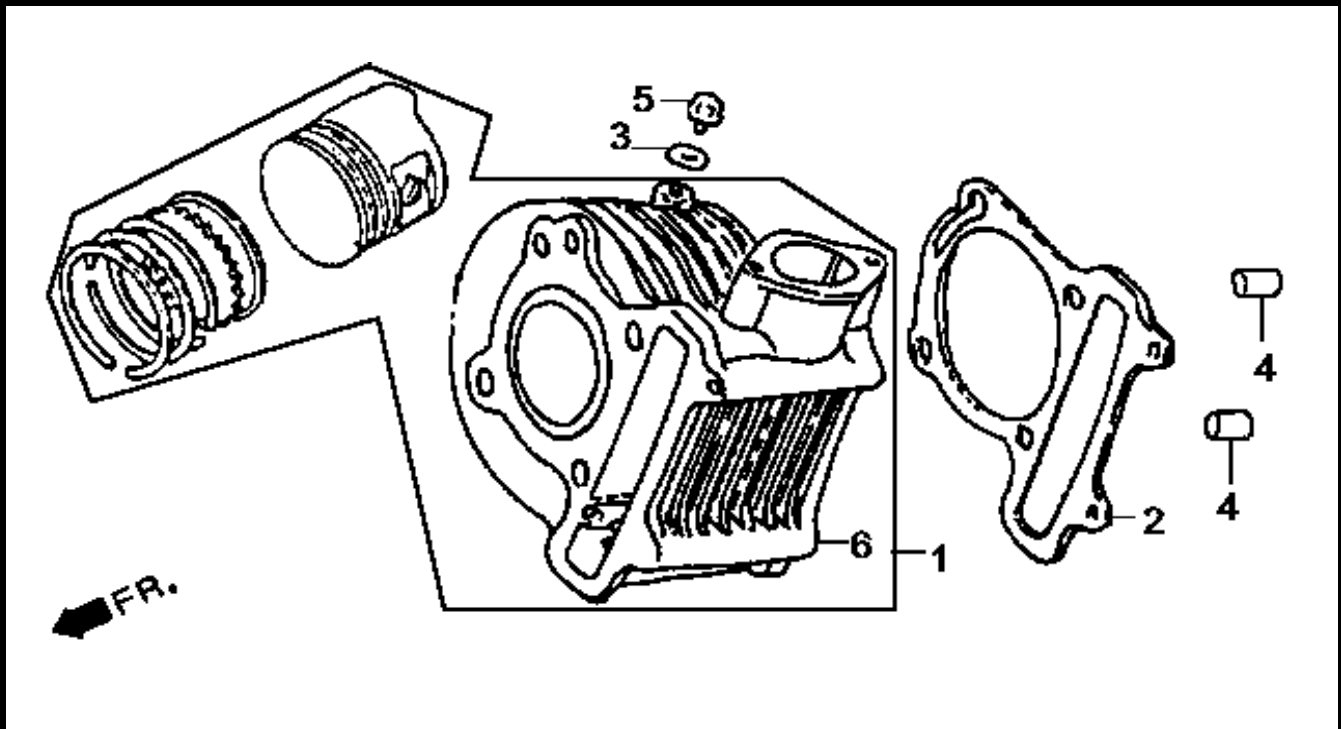
MODEL(S) A125Q2-2			A P P L Y	Q T Y R E Q
BLOCK NO. A-1		CHANGE DATE		
DESCRIPTION	PARTS NUMBER			
1.Cylinder head comp	12200-X07-000			1
3.IN Valve seat	12202-GY6-900-AA			1
4.Exh. vale seat	12203-GY6-901-M1			1
5.Cam shaft holder	12211-GY6-900			1
6.In guide valve	12237-GB4-681			1
7.Ex guide valve	12245-GB4-681-E1			1
8.Cylinder head gasket	12251-GY6-900-E1			1
9.Carb insulator gasket	16201-GY6-900			1
10.Carb insulator	16211-GY6-900			1
13.Washer 8mm	90465-MC4-000			4
15.O-ring 9x1.6	91305-028-158			2
16.Stud bolt 6x18	92900-06018-0B			2
17.Stud bolt II 6x50	92900-06050-0E			2
18.Flange nut 6mm	94050-06000			2
19.Flange nut 8mm	94050-08000			4
20.dowel pin 10x16	94301-10160			4
21.Flange sh bolt 6x100	96001-06100-00			2
22.Plug spark(C7HSA NGK)	1PC7HSA-3	1999-12-06	Y	1
Plug spark(CR7HSA NGK)	1PCR7HSA-3	2000-01-20	Y	1
23.Inlet pipe assy	1711A-V02-000			1



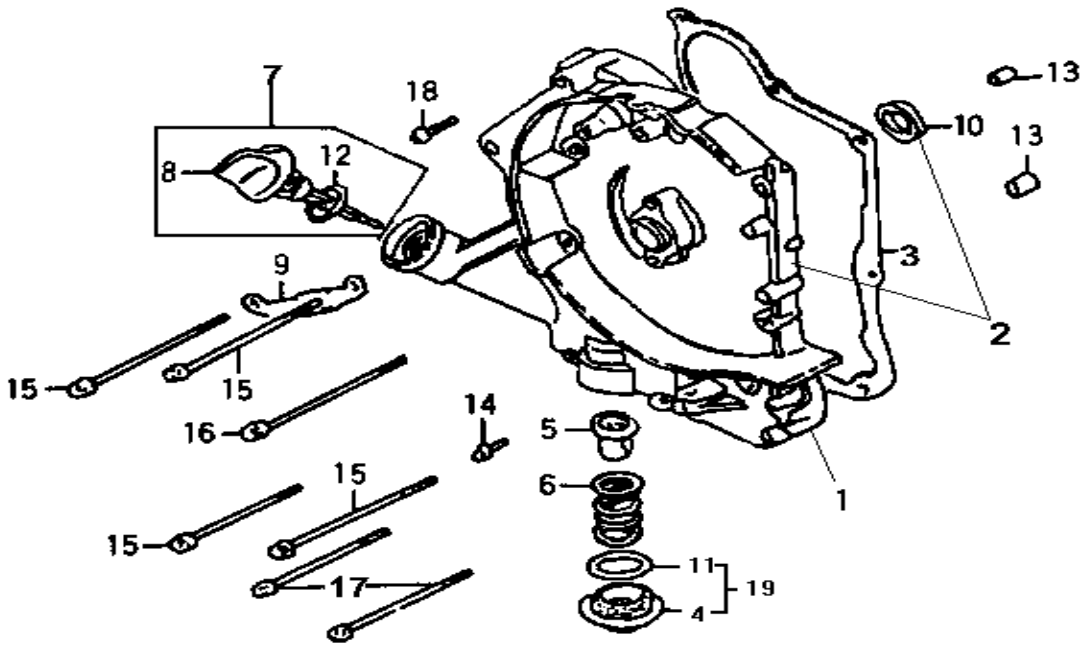
MODEL(S) A125Q2-2			A P P L Y	Q T Y R E Q
BLOCK NO. A-1		CHANGE DATE		
DESCRIPTION	PARTS NUMBER			
1.Stem seal valve	12209-GB4-681-M1			2
2.Cam shaft comp	14100-GY6-900			1
<i>(Revised)</i>	14100-V02-800	2000-08-13	N	1
3.Stopper plate comp	14150-GY6-900			1
4.Valve rocker arm	14431-GY6-900-F2			2
5.In rocker arm shaft comp	14450-GY6-900			1
6.Ex. rocker arm shaft	14452-GY6-900			1
7.Inlet valve	14711-GY6-900			1
8.Exhaust valve	14721-GY6-900			1
9.Valve outer spg	1475A-GN5-910-M1			2
11.Valve spring retainer	14771-GB4-680-E1			2
12.Valve spg seat outer	14775-MA6-000			2
13.Valve cotter	14781-MA6-000-E1			4
14.Tappet adjg screw	90012-333-000			2
15.Tappet adjg nut	90206-001-000			2



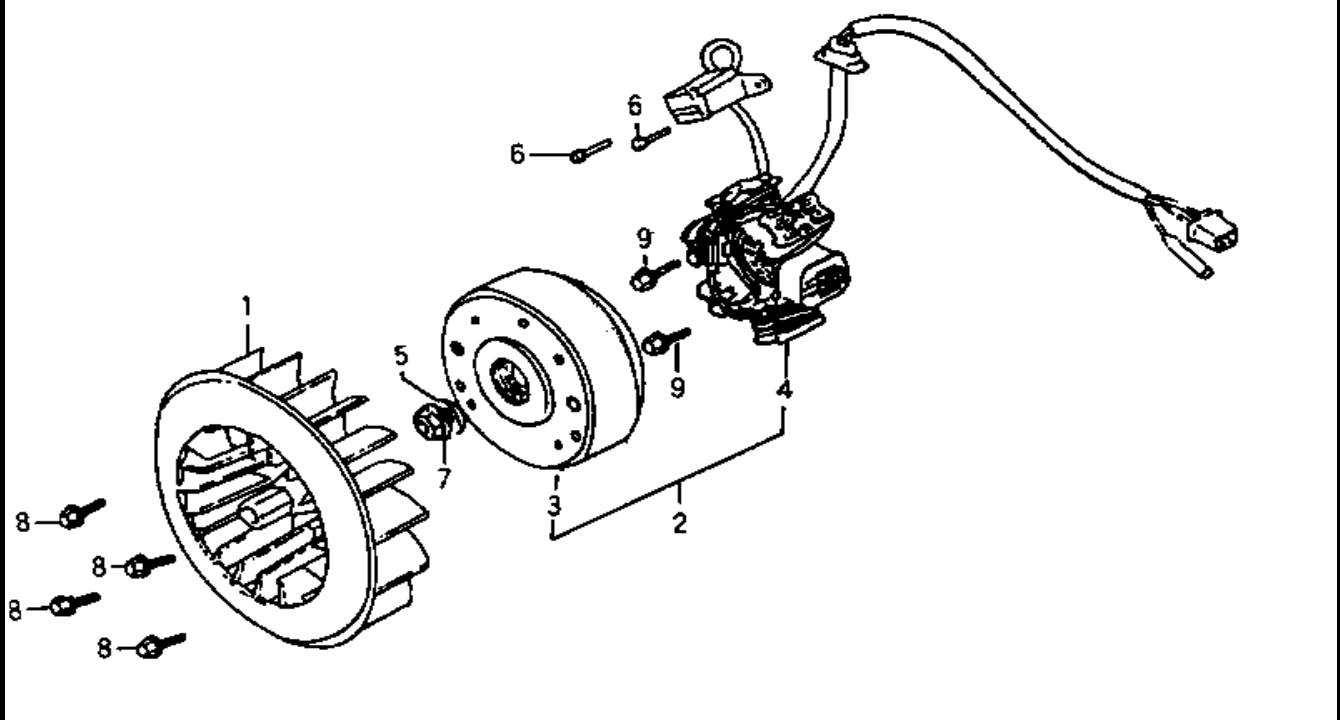
MODEL(S) A125Q2-2			A P P L Y	Q T Y R E Q
BLOCK NO. A-1 DESCRIPTION	PARTS NUMBER	CHANGE DATE		
1.Cam chain	1C14401-V02-000			1
2.Cam chain tensioner	14510-GY6-900-E1			1
3.Tensioner lifter assy	14520-GY6-901-M1			1
4.tensioner lifter gasket	14523-M9Q-000			1
5.Cam chain tensioner pivot assy	1453A-V02-000			1
7.Cam chain guide comp.	14610-GY6-900			1
8.flange shf bolt 6x22	90001-GHB-660			2
9.Pan screw 6x6	90005-KW1-900			1
11.O-ring 1.5x9.5	91306-105-690			1



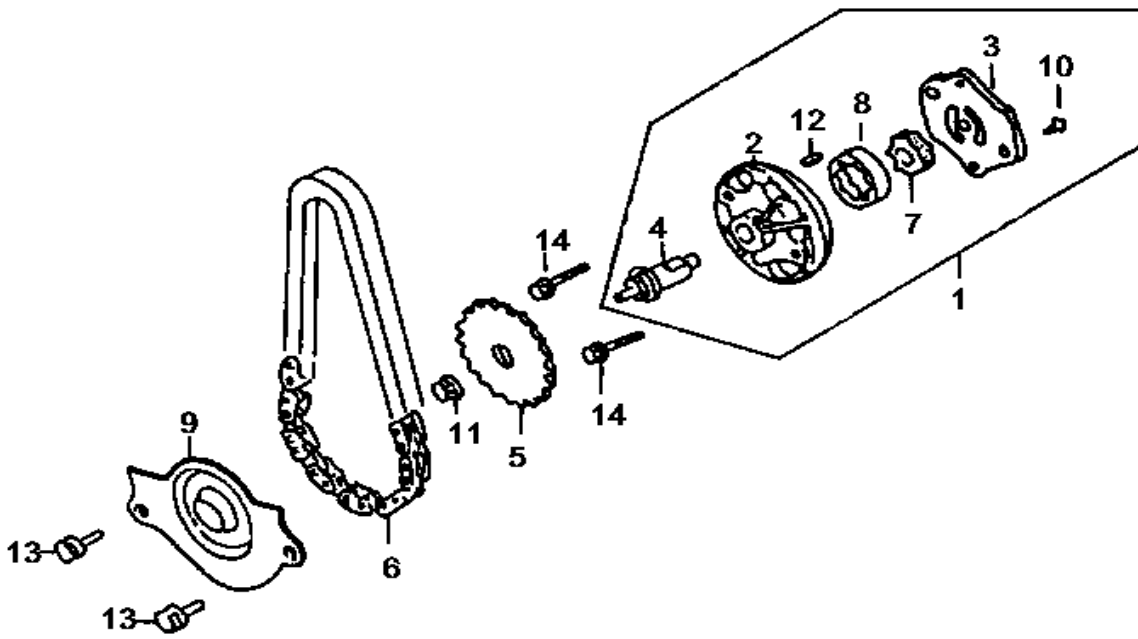
MODEL(S) A125Q2-2			A P P L Y	Q T Y R E Q
BLOCK NO. A-1	CHANGE DATE			
DESCRIPTION	PARTS NUMBER			
1.Cylinder Assy..	12100-GY6-000-A			1
2.Cylinder gasket	12191-GY6-900			1
3.Sealing washer 6.5mm	90461-MF2-710			1
4.Dowel pin 10x16	94301-10160			1
5.Flange bolt 6x12	95701-06012-00			1
6.Cylinder comp.	12100-GY6-900			1



MODEL(S) A125Q2-2			A P P L Y	Q T Y R E Q
BLOCK NO. A-1		CHANGE DATE		
DESCRIPTION	PARTS NUMBER			
1.R. crank case cover	11331-GY6-900			1
2.R. crank case cover assy	1133A-V02-000			1
3.R. cover gasket	11394-GY6-900			1
4.Tappet adj hole cap	1236A-V02-000			1
5.Oil filter screen	15421-107-000			1
6.Oil filter screen spg	15426-GE1-920			1
7.Oil level gauge assy	1565A-V02-000			1
9.Clamper acg cord	32961-GY6-900			1
10.Oil seal 19.8x30x5	91201-GY6-903-M2			1
11.O-ring 30.8	91302-001-020			1
12.O-ring 18x3	91307-035-000			1
13.Dowel pin 8x14	94301-08140			2
14.Flange sh bolt 6x32	96001-06032-00			1
15.Flange sh bolt 6x95	96001-06095-00			4
16.Flange sh bolt 6x100	96001-06100-00			1
17.Flange sh bolt 6x110	96001-06110-00			2
18.Flange sh bolt 6x40	96001-06040-00			1
19.Tappet adj hole cap assy	1236A-V02-000			1



MODEL(S) A125Q2-2			A P P L Y	Q T Y R E Q
BLOCK NO. A-1	CHANGE DATE			
DESCRIPTION	PARTS NUMBER			
1.Cooling fan comp.	19510-GY6-900			1
2.A.C.G assy	31100-M92-000			1
A.C.G assy	31100-GY6-920	2000-09-01	N	1
(Revised)				
3.Flywheel comp	31110-M92-000			1
4.Stator comp	31120-M92-000			1
(Revised)	31120-GY6-609	2000-09-01	N	1
5.Plain washer 12mm	90440-M9Q-000			1
6.Hex bolt 5x12	92101-05012-0A			2
7.Flange nut 12mm	94050-12000			1
8.Flange bolt sh 6x18	96001-06018-00			4
9.Flange bolt sh 6x20	96001-06020-00			2



MODEL(S)

A125Q2-2

BLOCK NO. A-1

DESCRIPTION

PARTS NUMBER

**CHANGE
DATE**

**A
P
P
L
Y**

**Q
T
Y
R
E
Q**

1.Oil pump assy

15100-GY6-900

1

5.Oil pump driven sprocket

15133-GY6-900

1

6.Oil pump chain

1C15141-V02-000-M1

1

9.Oil separater

15711-GY6-900

1

11.Flange nut 6mm

94050-06000

1

13.Flange bolt sh 6x12

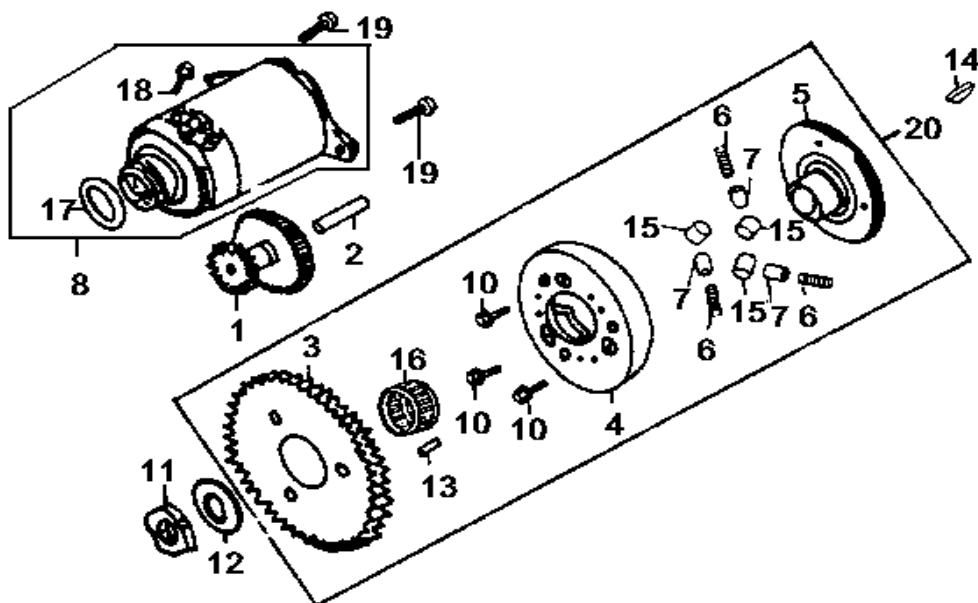
96001-06012-00

2

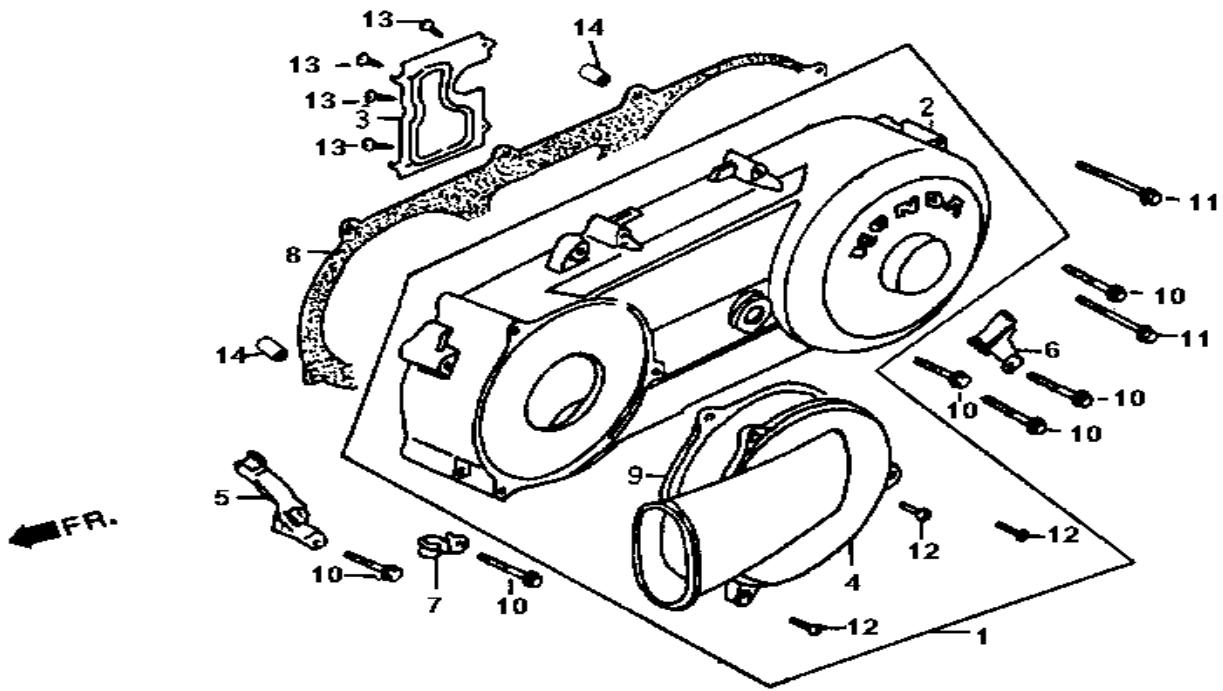
14.Flange bolt sh 6x25

96001-06025-00

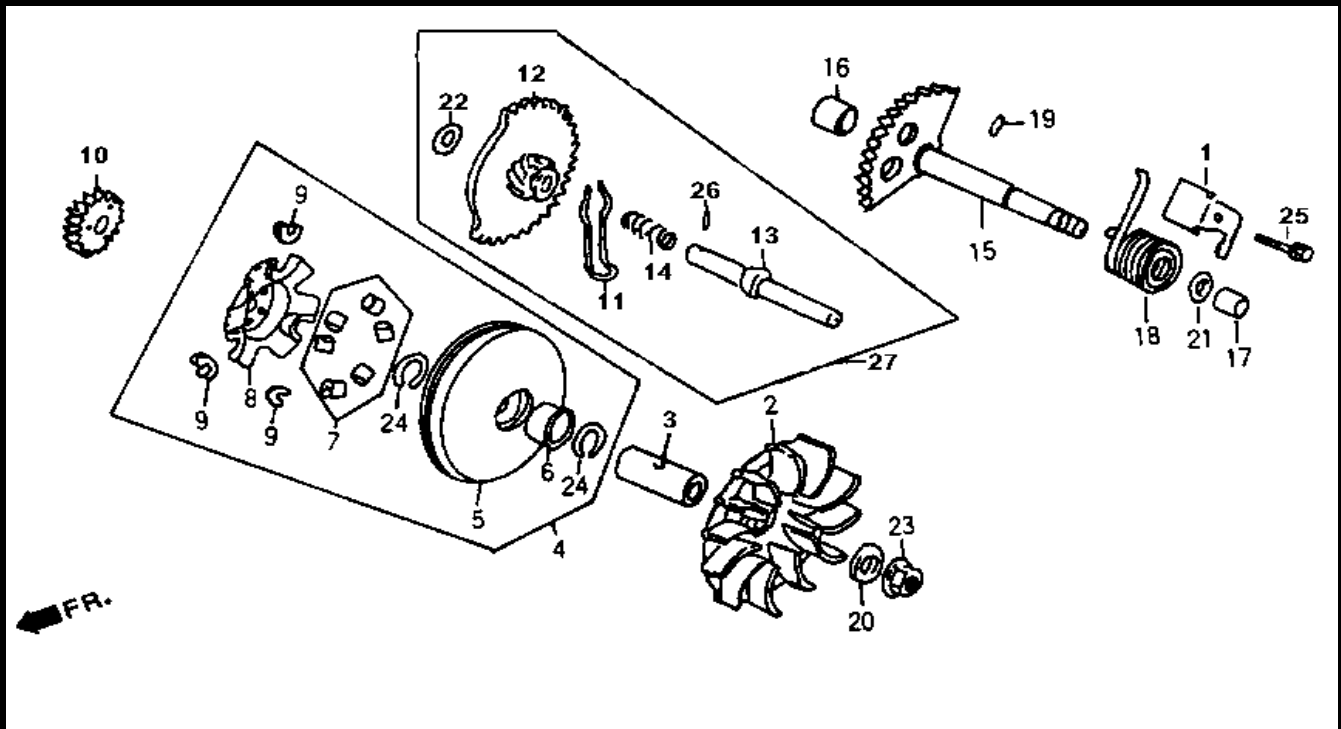
2



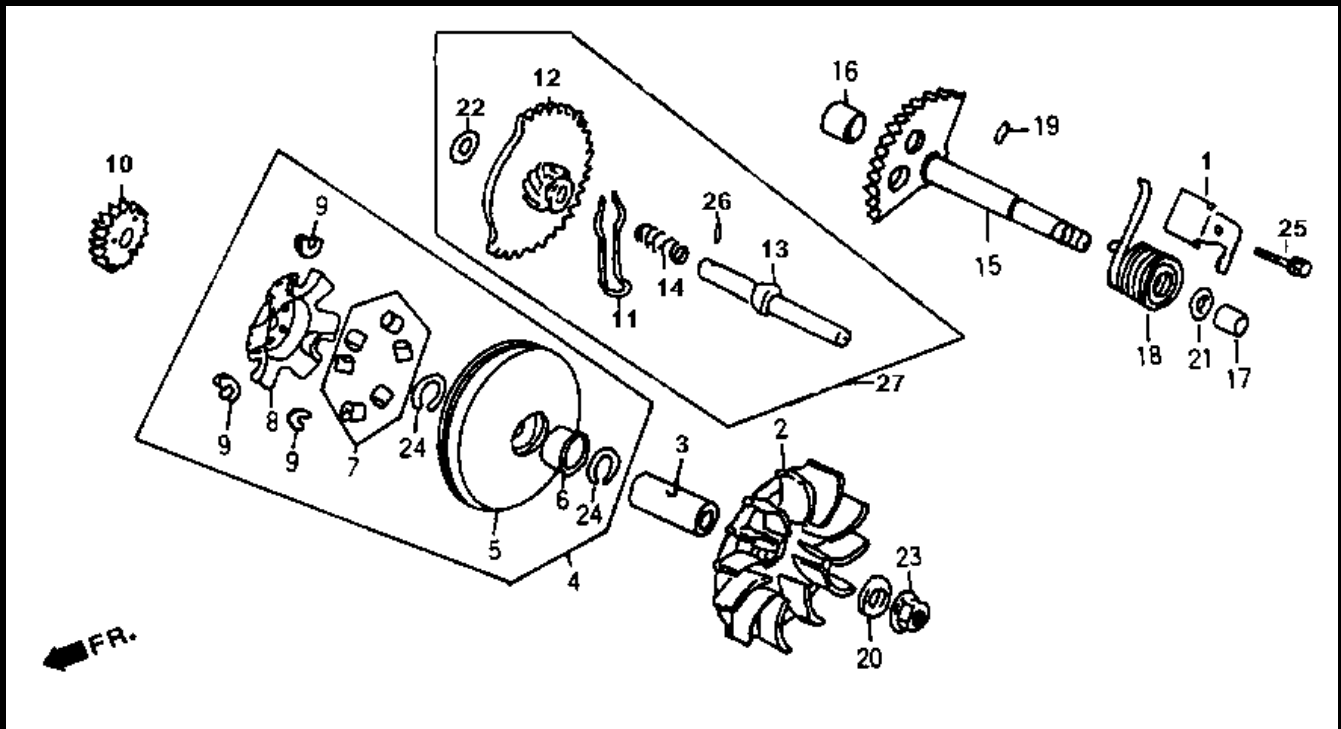
MODEL(S) A125Q2-2			A P P L Y	Q T Y R E Q
BLOCK NO. A-1	CHANGE DATE			
DESCRIPTION	PARTS NUMBER			
1.Starter reduction gear	28101-GY6-900			1
2.Starter reduction gear shaft	28102-GY6-900			1
3.Starting clutch gear comp	28110-M9Q-000			1
4.Starting clutch outer comp	28120-V02-000			1
6.Starting cutch roller spring	28125-426-000			3
7.Cap starting roller spring	28126-323-000			3
8.Motor assy start	31200-V02-000			1
11.Lock nut 22mm	90201-GY6-900			1
12.Thrust washer 22.2x31x2.5	90403-GY6-900			1
14.Woodruff key 25x14x4	90701-HB6-010			1
15.Roller 10x10	91101-179-710			3
16.Needle brg 28x32x17	91104-GY6-901-E1			1
19.Flange bolt sh 6x16	96001-06016-00			2
20.Start clutch outer assy	2812A-V02-000			1



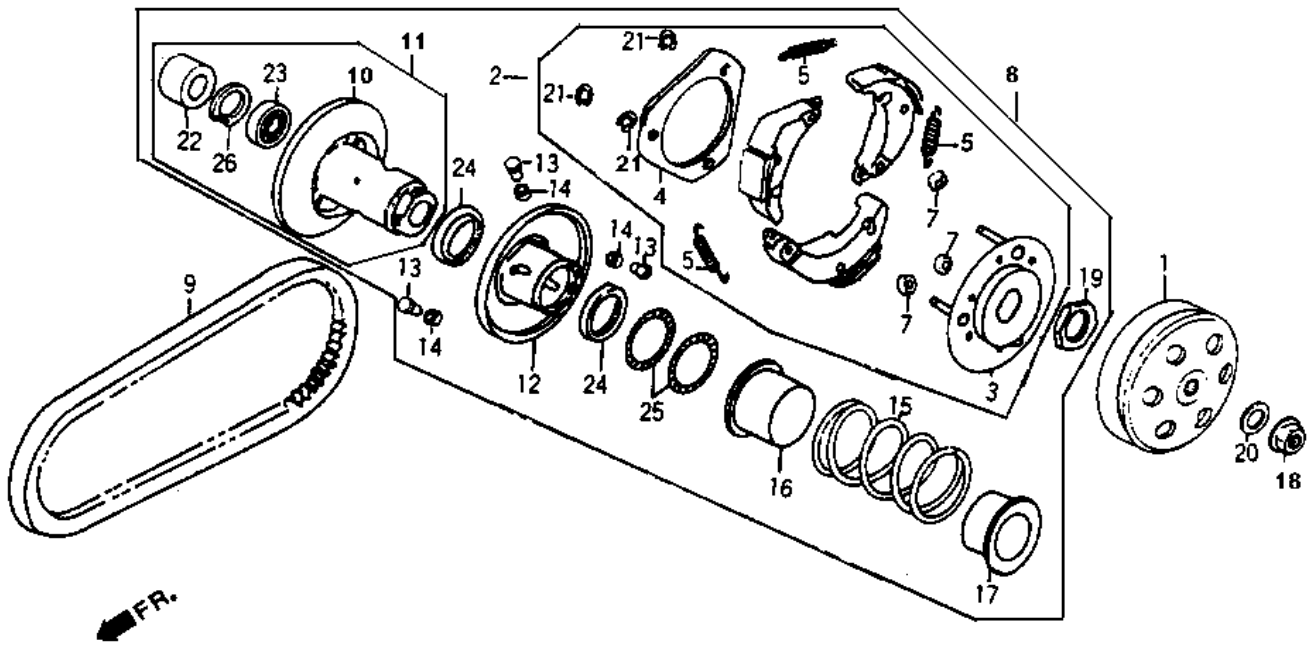
MODEL(S) A125Q2-2			A P P L Y	Q T Y R E Q
BLOCK NO. A-1	CHANGE DATE			
DESCRIPTION	PARTS NUMBER			
1.L. cover assy	1134A-M70-010			1
5.Throttle cable clammer	11381-GY6-940			1
6.Brake cable clammer	11382-GY6-900			1
7.Breather drain tube clammer	11383-GY6-900			1
8.L. cover gasket	11395-GY6-920			1
9.L. cover duct gasket	11396-GY6-900			1
10.Flange shf bolt 6x40	90001-GHB-710			6
11.Flange shf bolt 6x65	90001-GHB-760			2
14.Dowel pin 8x14	94301-08140			2



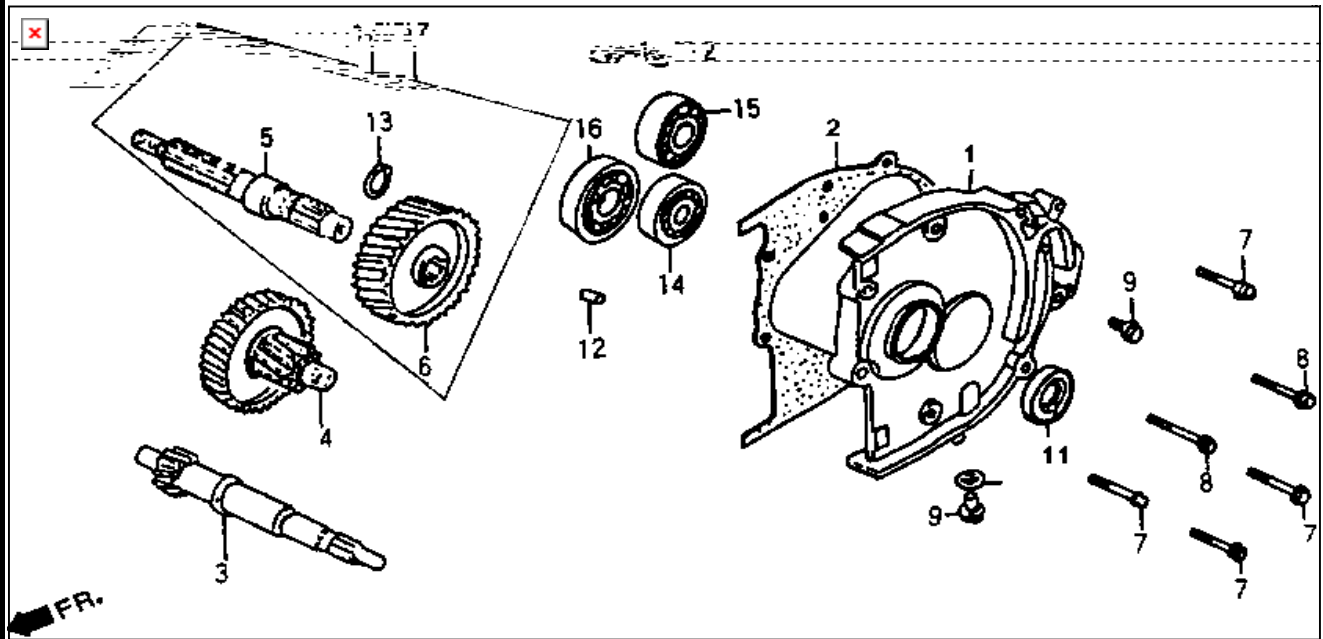
MODEL(S) A125Q2-2			A P P L Y	Q T Y R E Q
BLOCK NO. A-1	CHANGE DATE			
DESCRIPTION	PARTS NUMBER			
1.Kick kreturn stopper plate	11206-GY6-900			1
2.Drive face	22102-GY6-900-Z1			1
3.Drive face boss	22105-GY6-900			1
5.Movable drive face comp.	22110-V02-000			1
6.Bush 24x28x30	22112-GY6-901-M1			1
7.Weight roller comp.	22121-GY6-920-A			6
8.Ramp plate	22131-GY6-900			1
9.Piece slide	22132-KN2-900-A			3
10.Kick start driven gear(20T)	28221-GY6-900			1
11.Spg. friction starter gear	28223-KG8-000			1
12.Starter idle gear comp.	2823A-V02-920			1
14.Starter idle spring	28242-GA7-000			1
15.Kick starter spindle comp.	28250-GY6-900			1
16.Bush 12x16x12	28254-GA7-003			1
17.Kick spindle bush 14x18x16	28254-KG8-910			1
18.Kick starter spring	28281-KG8-901			1
19.Special pin 4.5mm	28282-GA7-000			1
20.Plain washer 12mm	90440-M9Q-000			1
21.Washer 14.2x21x1	90451-155-000			1
22.Washer 12.5mm	90452-KG8-0000			1
23.Flange nut c m12	90201-PB8-000			1



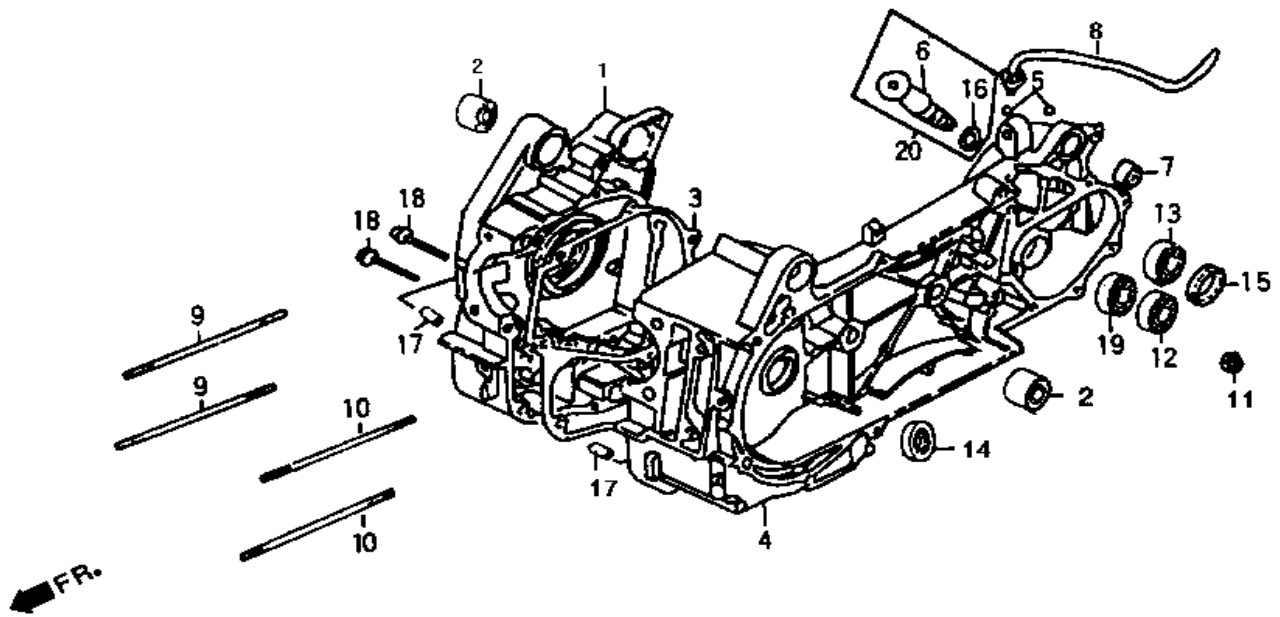
MODEL(S) A125Q2-2			A P P L Y	Q T Y R E Q
BLOCK NO. A-1	CHANGE DATE			
DESCRIPTION	PARTS NUMBER			
24.Clip 28mm	90601-GY6-900			2
25.Flange bolt sh 6x14	96001-06014-00			1
26.Roller 3x8.5	96220-30085			1
27.Starter idle gear assy	2823A-V02-920			1



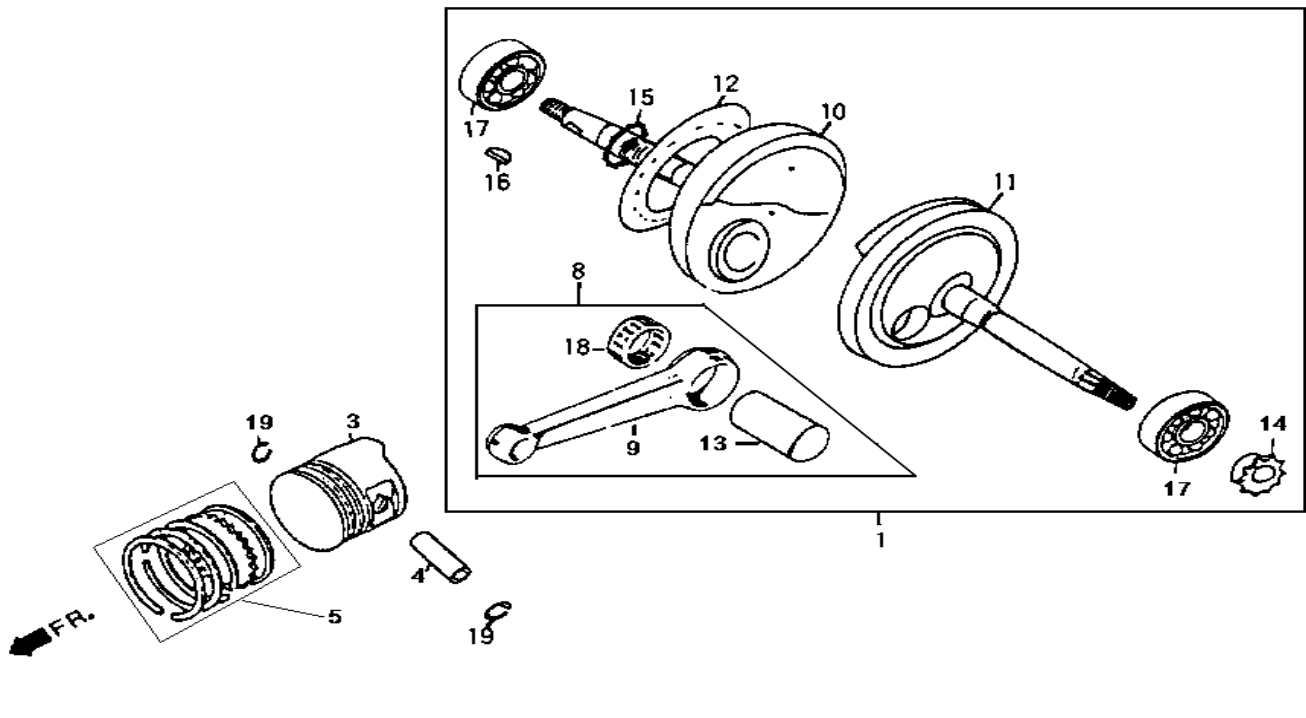
MODEL(S) A125Q2-2			A P P L Y	Q T Y R E Q
BLOCK NO. A-1		CHANGE DATE		
DESCRIPTION	PARTS NUMBER			
1.Clutch outer	22101-GY6-940			1
2.Clutch weight set	22300-GY6-901			1
5.Clutch spring	22401-GY6-901			3
7.Clutch damper rubber	22804-GB2-000			3
8.Drive pulley assy.	23010-M70-010			1
9.Drive belt	1B01GY601			1
11.Driven face assy.	23200-GY6-900			1
12.Movable driven face comp.	23220-GY6-920			1
13.Roller guide pin	23225-GC8-003			3
14.Roller guide	23226-GC8-003			3
18.Flange nnut c m12	90201-PB8-000			1
19.Special nut 28mm	90202-187-000			1
20.Plain washer 12mm	90440-M9Q-000			1
21.Cir clip 7mm	90605-166-720			3
22.Brg ndl 20x29x18	91001-GY6-900-M1			1
23.Ball radial brg 6902U	91002-GA7-701			1
24.Driven face seal 34x41x4	91211-KN7-671			2
25.Piniin cap o-ring	91351-642-000			2
26.In cir clip 28mm	94520-28000			1



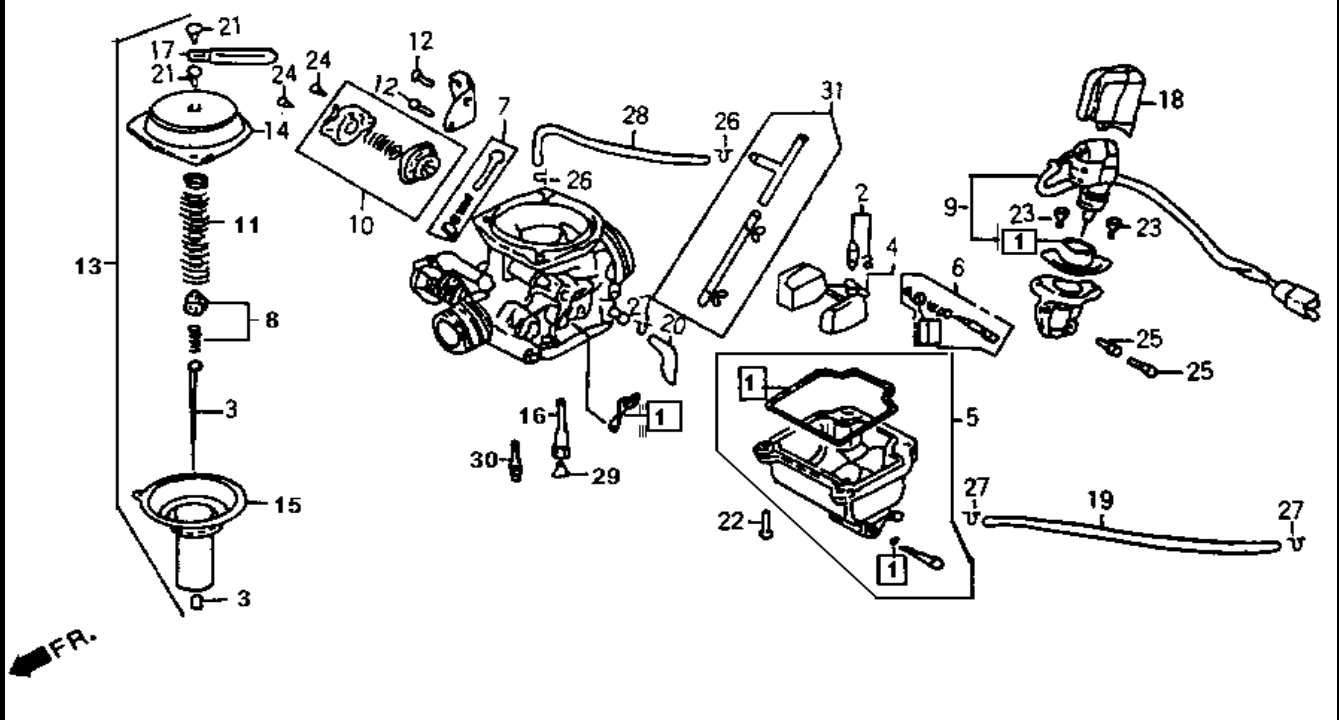
MODEL(S) A125Q2-2			A P P L Y	Q T Y R E Q
BLOCK NO. A-1	CHANGE DATE			
DESCRIPTION	PARTS NUMBER			
1.Mission cover	21301-GY6-921			1
2.Mission cover gasket	21395-GY6-900			1
3.Drive shaft	23411-GY6-920			1
4.Counter shaft comp.	23420-GY6-900			1
5.Final shaft	23431-GY6-920			1
6.Final gear	23432-GY6-900			1
7.Flange shf bolt 6x28	90001-GHB-680			4
8.Flange shf bolt 6x35	90001-GHB-700			2
9.Special bolt 8mm	90103-KN8-000			2
10.Washer 8mm	90474-333-000			1
11.Oil seal 20x32x6	91202-KJ9-003			1
12.Dowel pin 8x14	94301-08140			2
13.Ex. cir clip 20mm	94510-20000			1
14.Bearing ball radial 6202	96100-62020-00			1
15.Bearing ball radial 6203	96100-62030-00			1
16.Bearing ball radial 6204	96100-62043-00			1
17.Final gear shaft assy.	2343A-V02-920			1



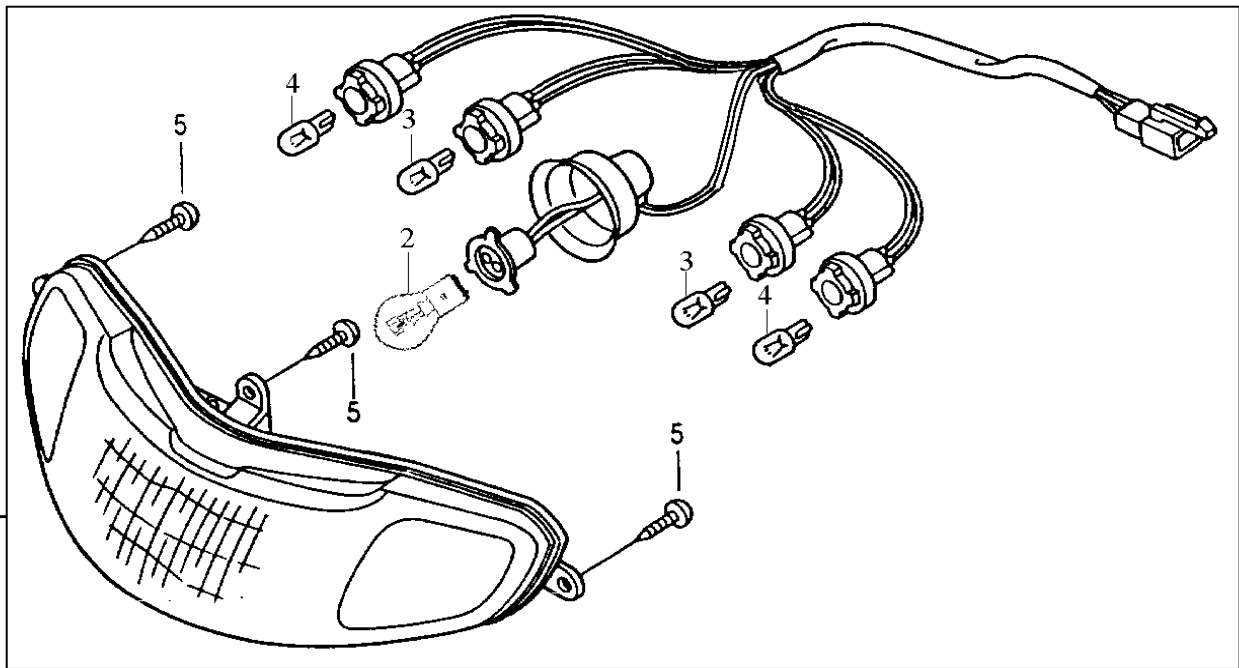
MODEL(S) A125Q2-2			A P P L Y	Q T Y R E Q
BLOCK NO. A-1		CHANGE DATE		
DESCRIPTION	PARTS NUMBER			
1.R. crank casse	11100-GY6-900			1
2.Eng. hanger rub.bush	11102-187-003			2
3.Crank case gasket	11192-GY6-900			1
4.L. crank case	11201-GY6-900			1
5.Spring guide rubber	11202-GC7-300			2
7.RR. cush und bush rubber	11203-GC7-300			1
8.Mission breather tube	11221-GY6-900			1
9.A stud bolt 8x187.5	90031-GY6-900			2
10.B stud bolt 8x195.5	90032-GY6-900			2
11.Flange nut 8mm	90309-KF0-003			2
12.Radial ball bearing 6301TMB	91003-KS4-003			1
13.Radial ball bearing 6004U	91009-GE0-003-M1			1
14.Oil seal 19.8x30x5	91201-GY6-903-M2			1
15.Oil seal 27x42x7	91255-GE0-003			1
16.O-ring 7.5x1.5	91301-053-000			1
17.Dowel pin 8x14	94301-08140			2
18.Flange sh Bolt 6x50	96001-06050-00			2
19.Radial ball bearing 6002	96100-60020-00			1
20.Brake shoe anchor pin assy.	1120A-V01-000			1



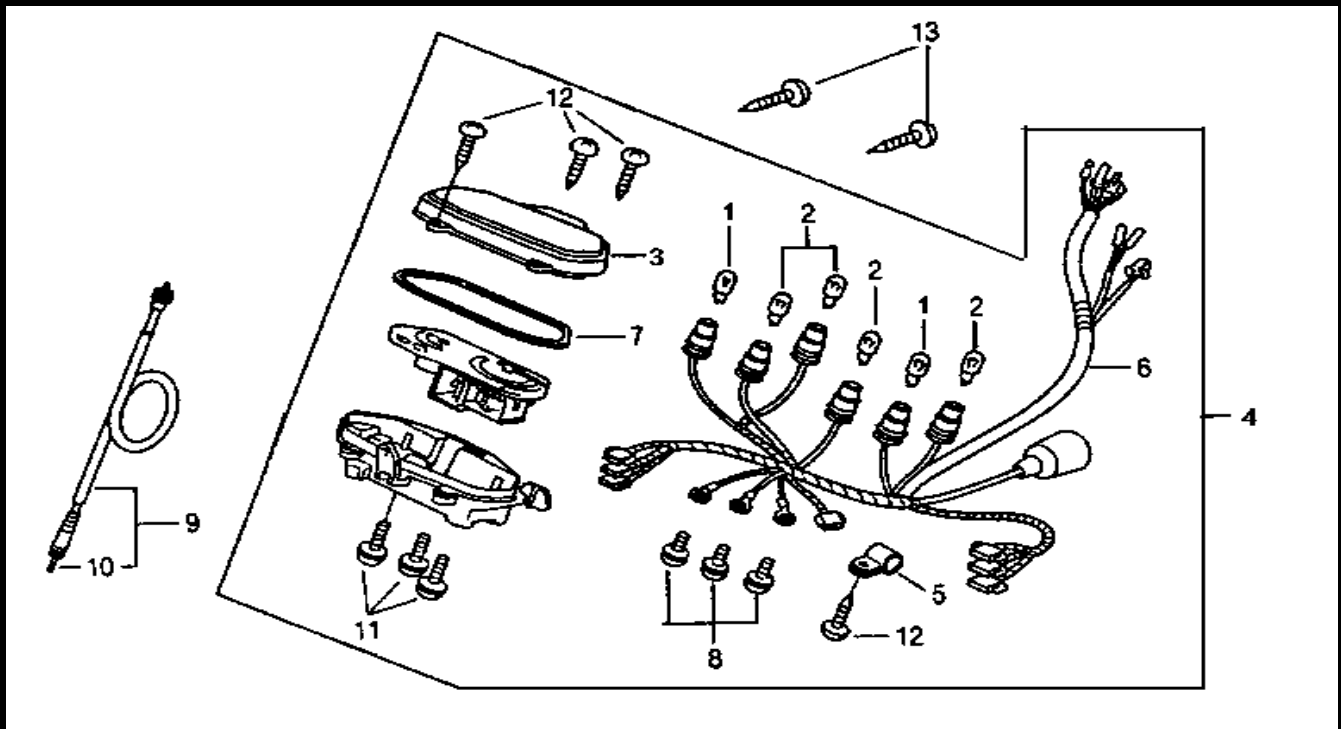
MODEL(S) A125Q2-2			A P P L Y	Q T Y R E Q
DESCRIPTION	PARTS NUMBER	CHANGE DATE		
1.Crank shaft comp.	13000-GY6-920			1
3.Piston	13101-GY6-920			1
4.Piston pin	13111-384-000			1
5.Piston ring assy.	13010-V02-900			1
8.Conn. rod assy.	1320A-V02-920			1
9.Conn. rod	13201-GY6-900-H1			1
13.Crank pin	13381-GY6-900-H1			1
14.Timing sprocket	14311-GY6-900			1
15.Oil pump drive sprocket	15131-GY6-900-H1			1
16.Woodruff key 25×14×14	90701-HB6-010			2
17.Ball radial brg.6322	91002-GY6-303			2
18.Conn. rod brg.	91101-GY6-901-M1			1
19.Piston pin clip 15mm	94601-15000			2



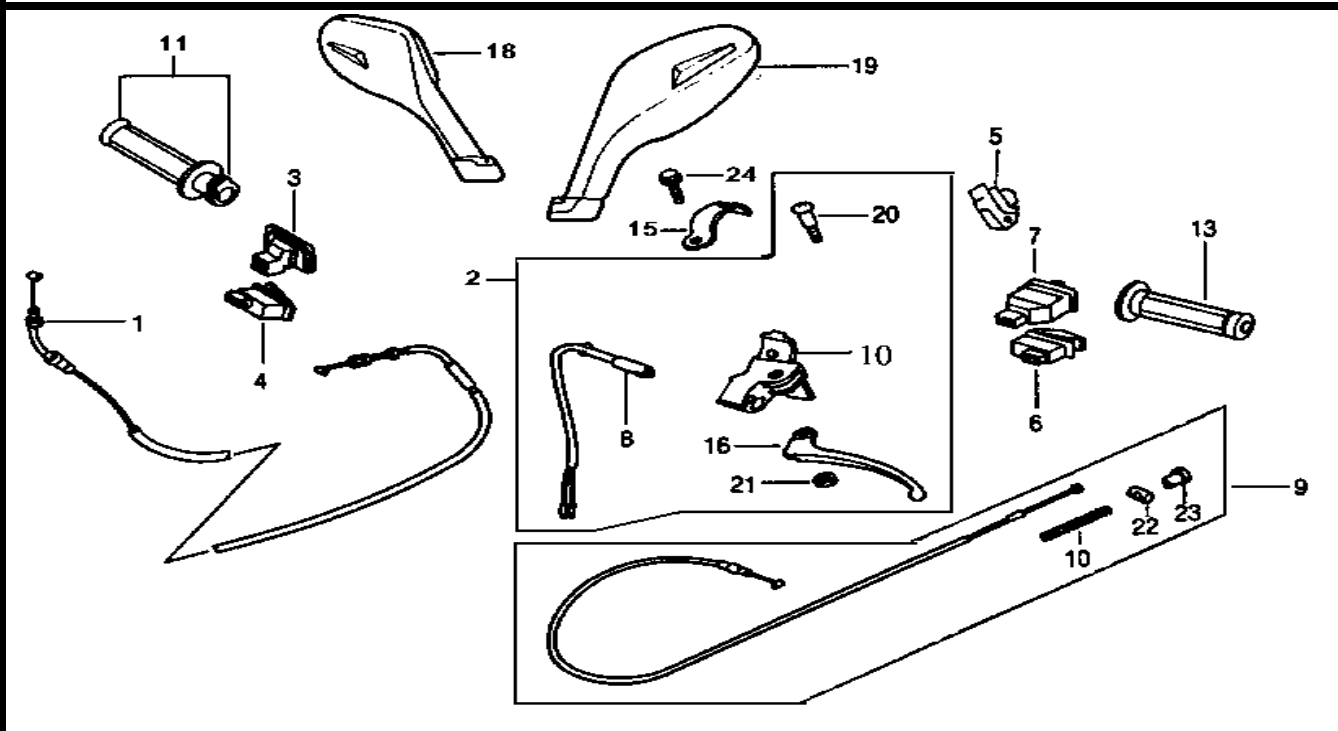
MODEL(S)			A P P L Y	Q T Y R E Q
A125Q2-2				
	BLOCK NO. A-1		CHANGE DATE	
DESCRIPTION	PARTS NUMBER			
2. Float valve set	16011-382-004			1
3. Jet needle set	16012-GY6-900			1
4. Float set	16013-KN7-911			1
9. Starter valve set	16046-GY6-900			1
13. Carb set	1610A-V02-000			1
23. Screw washer 4x8	93892-04008-00			2
25. Screw washer 5mm	93892-05012-08			2
26. Tube clip b7	95002-02070-00			2
27. Tube clip b8	95002-02080			2
31. 3WAY joint assy.	3877A-V02-000			1



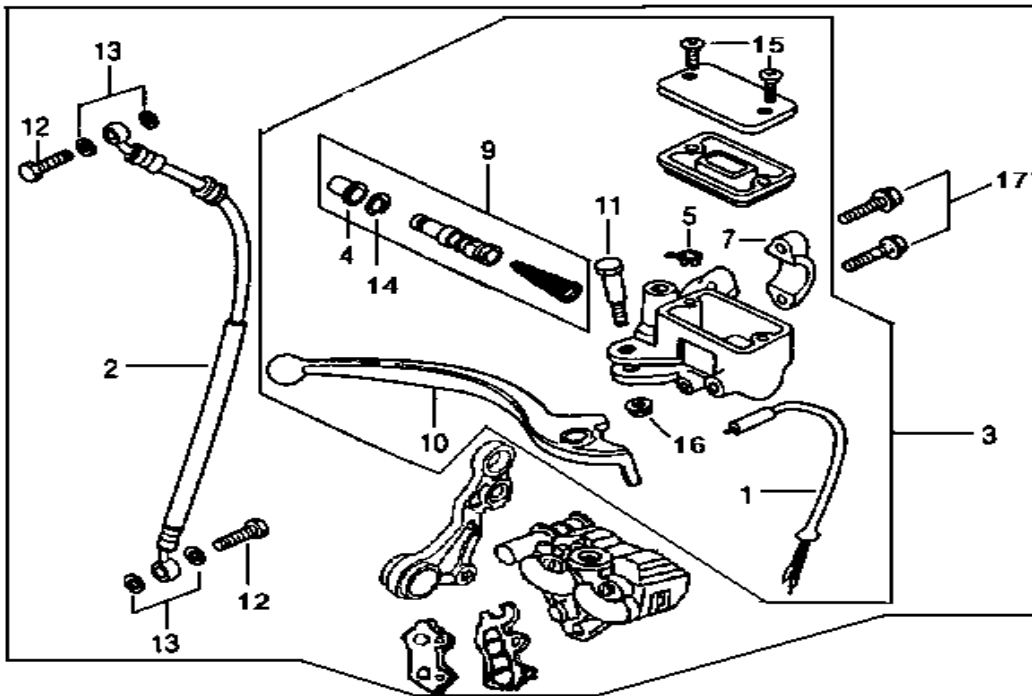
MODEL(S) A125Q2-2			A P P L Y	Q T Y R E Q
BLOCK NO. A-1	CHANGE DATE			
DESCRIPTION	PARTS NUMBER			
1.Head light ASSY.	33100-M70-020	2009-12-17		1
2.Head light bulb (12V 35W)	34901-M42-000	"		1
3.Bulb position lamp (12V 3W)	34903-M42-000	"		2
4.Winker light bulb (12V 10W)	34905-B06-000-E	"		2
5.Tapping screw 5x12	93903-25220			3



MODEL(S) A125Q2-2			A P P L Y	Q T Y R E Q
BLOCK NO. A-1	CHANGE DATE			
DESCRIPTION	PARTS NUMBER			
1. Bulb wedge base 12V/3.4W	34908-GA7-701			2
2. Bilb wedge base 12V/1.7W	34908-MB9-871			4
3. Lens	37211-GY6-000			1
4. Speedometer assy	37200-M70-000			1
Speedometer assy	37200-M70-020	1998-11-16	NO	1
9. Spdmt cable comp	44830-H08-010			1



MODEL(S)			A	Q
A125Q2-2			P	T
	BLOCK NO. A-1		L	R
		CHANGE	Y	E
		DATE		Q
DESCRIPTION	PARTS NUMBER			
1.Throt cable comp	17910-GY6-920			1
2.L. STRG Handle Lever assy	5317B-M70-000	1999-06-17		1
3.Lighing sw unit	35150-M38-000			1
4.Sw unit start	35160-M9Q-000			1
5.Sw unit dimmer	35170-M9Q-000			1
6.Switch unit horn	35180-M9Q-000			1
7.Switch unit winker	35200-M9Q-000			1
8.Sw assy fr stop	35340-GY6-920			2
9.Rr brk cable comp	43450-GY6-920			1
10.Handle brake	53172-GY6-920			1
	53172-V02-900	2000-03-05	N	1
11.Throt grip comp	53140-M9Q-000			1
13.L handle grip	53166-M9Q-000			1
15.Handle brkt band	53173-GY6-920			1
16.Lever L. handle	53178-V02-900			1
Lever L. handle (REVISED)	53178-V02-800	1999-11-29	N	1
18.R back mirror assy	88110-T40-000			1
19.L back mirror assy	88120-T40-000			1
20.Handle level pivot bolt	90114-166-006	1999-06-17		1
21.Hex nut 5MM	94001-05000-0S			2
24.Flange bolt sh 6x20	96001-06020-00			2



MODEL(S)
A125Q2-2

BLOCK NO. A-1

CHANGE
DATE

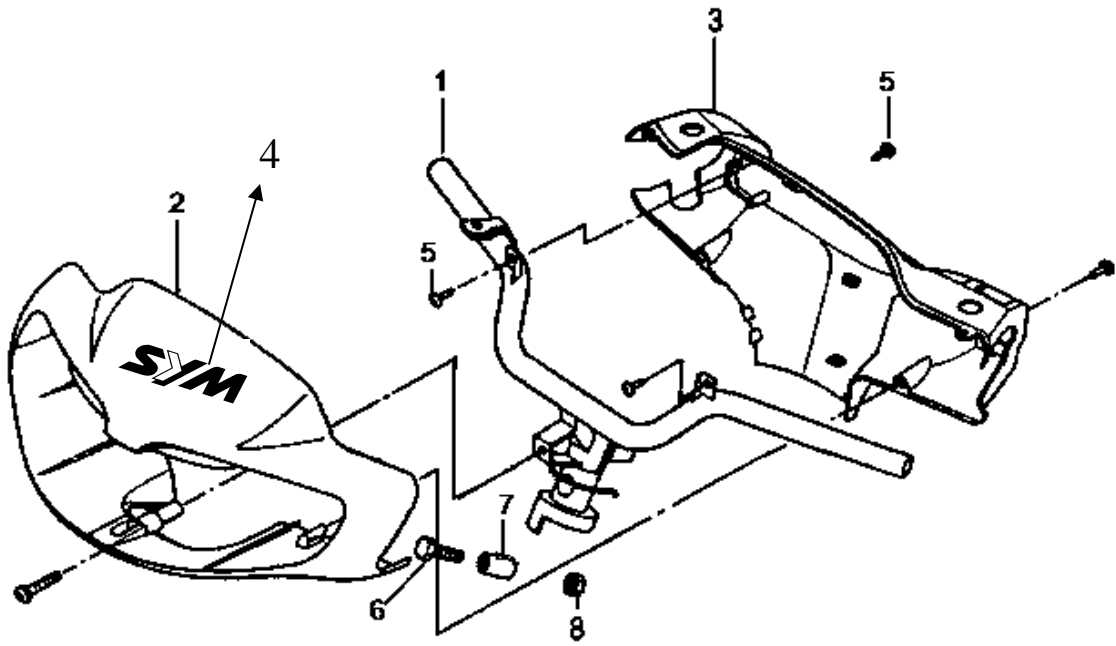
A
P
P
L
Y

Q
T
Y
R
E
Q

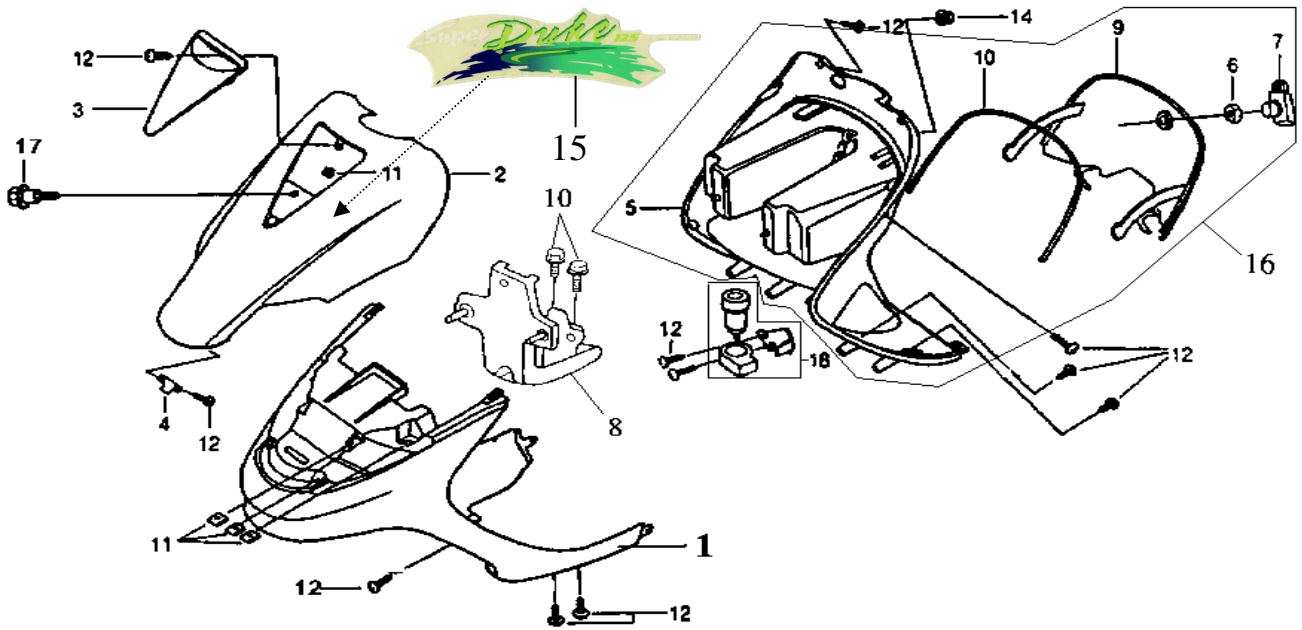
DESCRIPTION

PARTS NUMBER

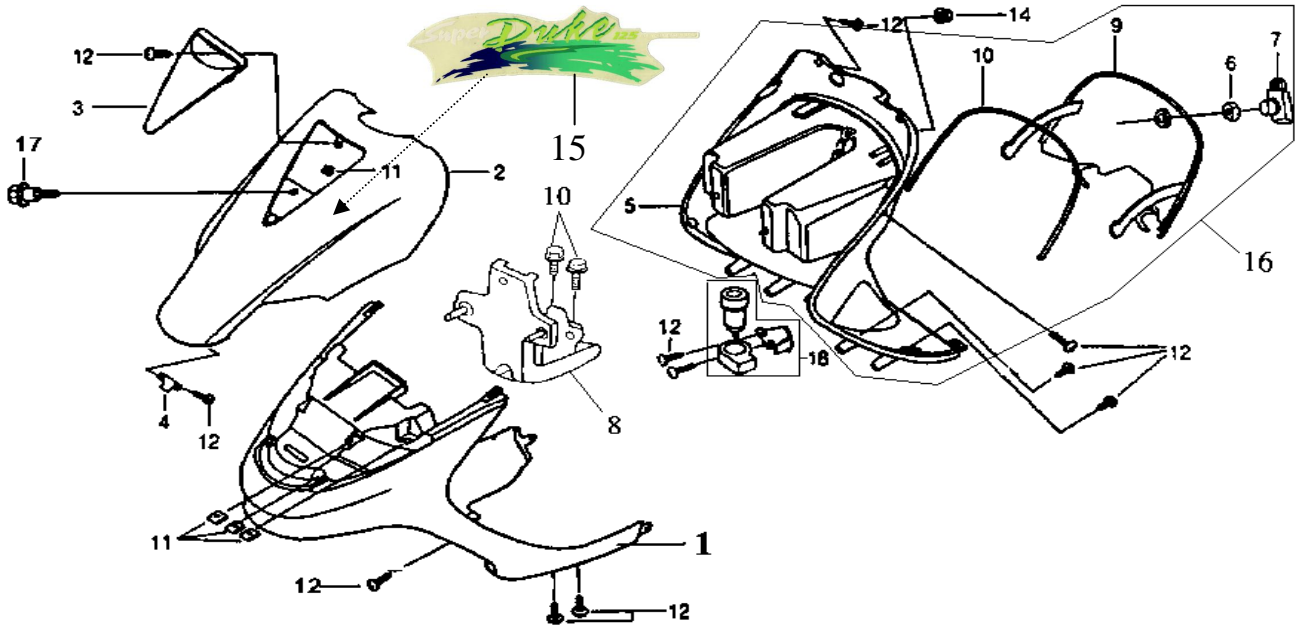
1.FR. Stop switch	35340-M70-000			1
2.FR. brake hose assy	45126-H09-010			1
3.FR. master cylinder assy	45500-M70-000			1
7.Master cylinder holder	45517-GW0-751			1
9.Master cylinder set	45530-MN9-305			1
10.R. steering handle lever	53175-H09-020			1
	53175-H6C-000	2000-04-15	N	1
11.Handle lever pivot bolt	90114-166-006			1
12.Oil bolt	90145-MS9-611			2
13.Oil bolt washer	90545-300-000			4
15.Flat screw 4x12	93500-04012-0H			2
16.Flange nut 6MM	94050-06000			1
17.Flange bolt 6x22	95900-06022-00			2
18.FR.brake assy	4550A-M70-000			1



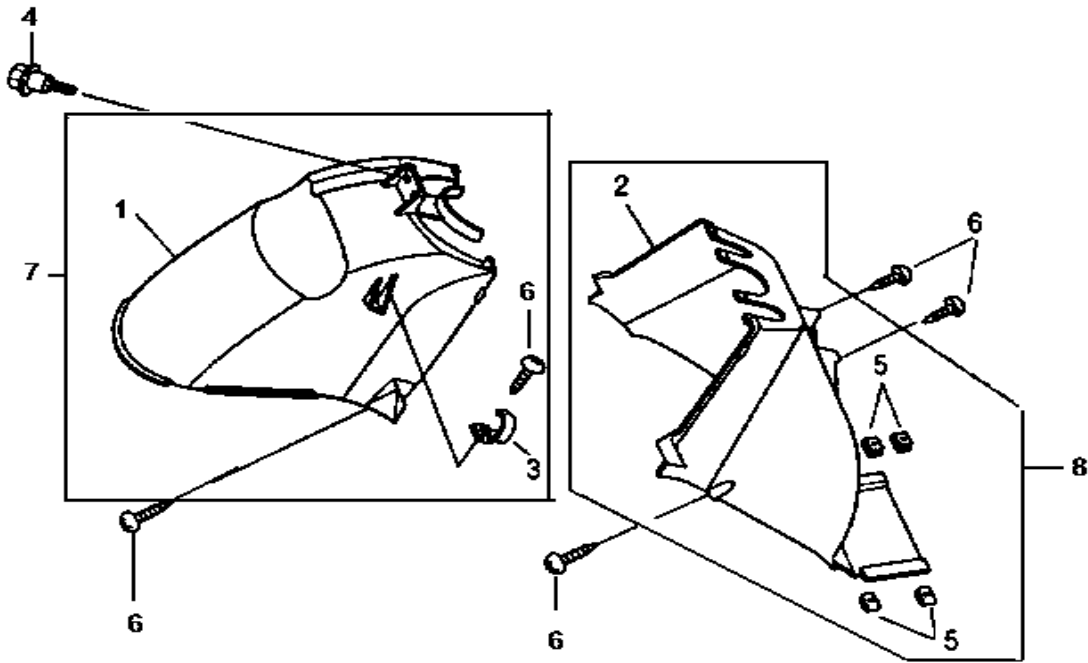
MODEL(S) A125Q2-2			A P P L Y	Q T Y R E Q
BLOCK NO. A-1		CHANGE DATE		
DESCRIPTION	PARTS NUMBER			
1.Strg handle comp	5310A-H12-000			1
2.FR.handle cover assy (<i>BK-001U</i>)	5320A-H21-000-KQ			1
FR.handle cover assy (<i>P-3850U</i>)	5320A-H21-000-LJ			1
FR.handle cover assy (<i>P-3850U</i>)	5320A-H21-000-LJ	1999-11-06	Y	1
FR.handle cover assy (<i>GN-5310U</i>)	5320A-H21-000-NU			1
FR.handle cover assy (<i>S-880S</i>)	5320A-H21-000-SQ			1
FR.handle cover assy (<i>BU-4035S</i>)	5320A-H21-000-CO *			1
FR.handle cover assy (<i>S-880S</i>)	5320A-H21-000-SQ			1
FR.handle cover assy (<i>BK-0406S</i>)	5320A-H21-000-KV			1
FR.handle cover assy (<i>BU-283S</i>)	5320A-H21-000-BJ			1
FR.handle cover assy (<i>R-1543S</i>)	5320A-H21-000-HY			1
FR.handle cover assy (<i>BN-1516P</i>)	5320A-H21-000-AE			1
3.RR.handle cover (<i>GY-426U</i>)	53206-H12-000-GK			1
4.SYM stripe(For BK/GN/P)	87123-G22-000-T1	1999-08-04		1
SYM stripe(For S)	87123-G22-000-T2	1999-08-04		1
5.Tapping screw 4x12	93903-24320			4
6.Flange bolt 10x50	90106-GN5-900			1
7.Handle setting collar	53125-M9Q-000			1
8.Nut u flange 10mm	90304-GW0-901-M1			1



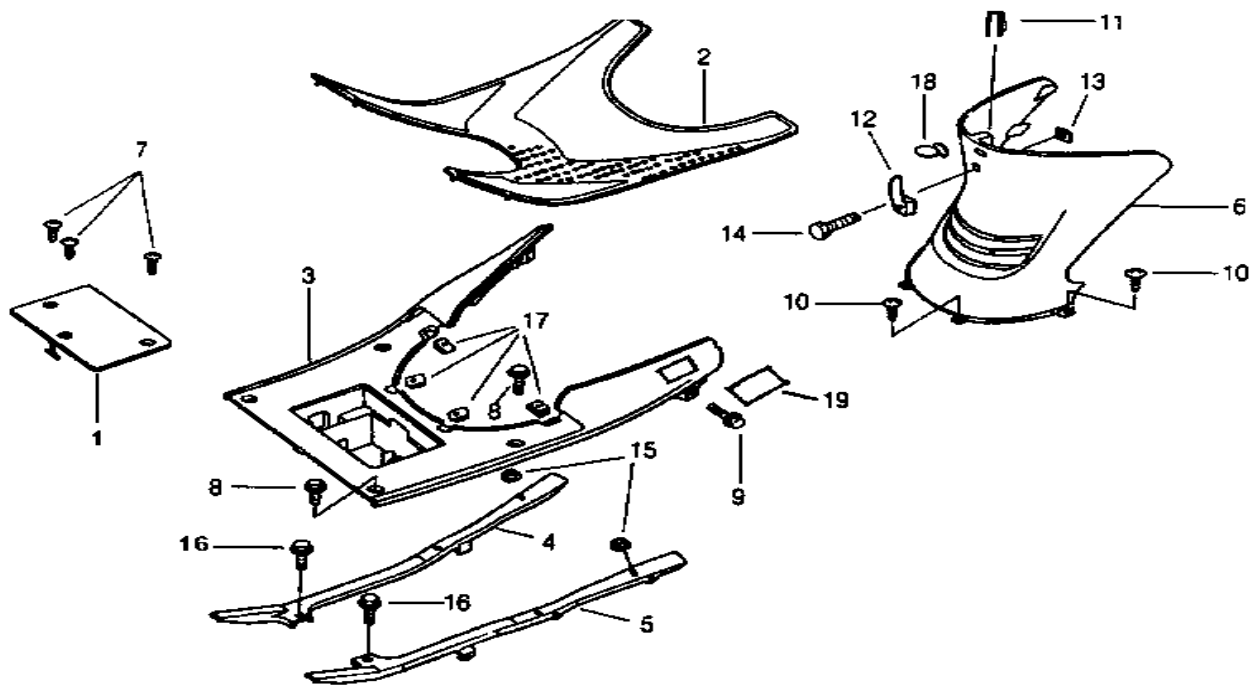
MODEL(S) A125Q2-2			A P P L Y	Q T Y R E Q
BLOCK NO. A-1		CHANGE DATE		
DESCRIPTION	PARTS NUMBER			
1.FR.fender (BK-001U)	61100-H12-000-KA			1
FR.fender (P-3730U)	61100-H12-000-LK			1
FR.fender (GN-5310U)	61100-H12-000-NV			1
FR.fender (GY-423U)	61100-H12-000-GA			1
FR.fender (GY-426U)	61100-H12-000-GK			1
2.FR.cover assy (BK-005S)	6430B-M62-000-KQ			1
FR.cover assy(P-3850S)	6430B-M62-000-LJ			1
FR.cover assy(GN-5310S)	6430B-M62-000-NU			1
FR.cover assy(S-880S)	6430B-M62-000-SQ			1
FR.cover assy(BU-4035S)	64301-H12-000-CO *			1
FR.cover assy(S-880S)	64301-H12-000-SQ			1
FR.cover assy(BK-0406S)	64301-H12-000-KV			1
FR.cover assy(BU-283S)	64301-H12-000-BJ			1
FR.cover assy(R-1543S)	64301-H12-000-HY			1
FR.cover assy(BN-1516P)	64301-H12-000-AE			1
3.FR.cover lid assy (BK-005S)	6430F-M62-000-KQ			1
FR.cover lid assy (P-3850S)	6430F-M62-000-LJ			1
FR.cover lid assy (GN-5310S)	6430F-M62-000-NU			1
FR.cover lid assy (S-880S)	6430F-M62-000-SQ			1
FR.cover lid assy (S-880S)	6430G-M70-000-CO *			1
FR.cover lid assy (BK-0406S)	6430G-M70-000-SQ			1
FR.cover lid assy (BU-283S)	6430G-M70-000-KV			1



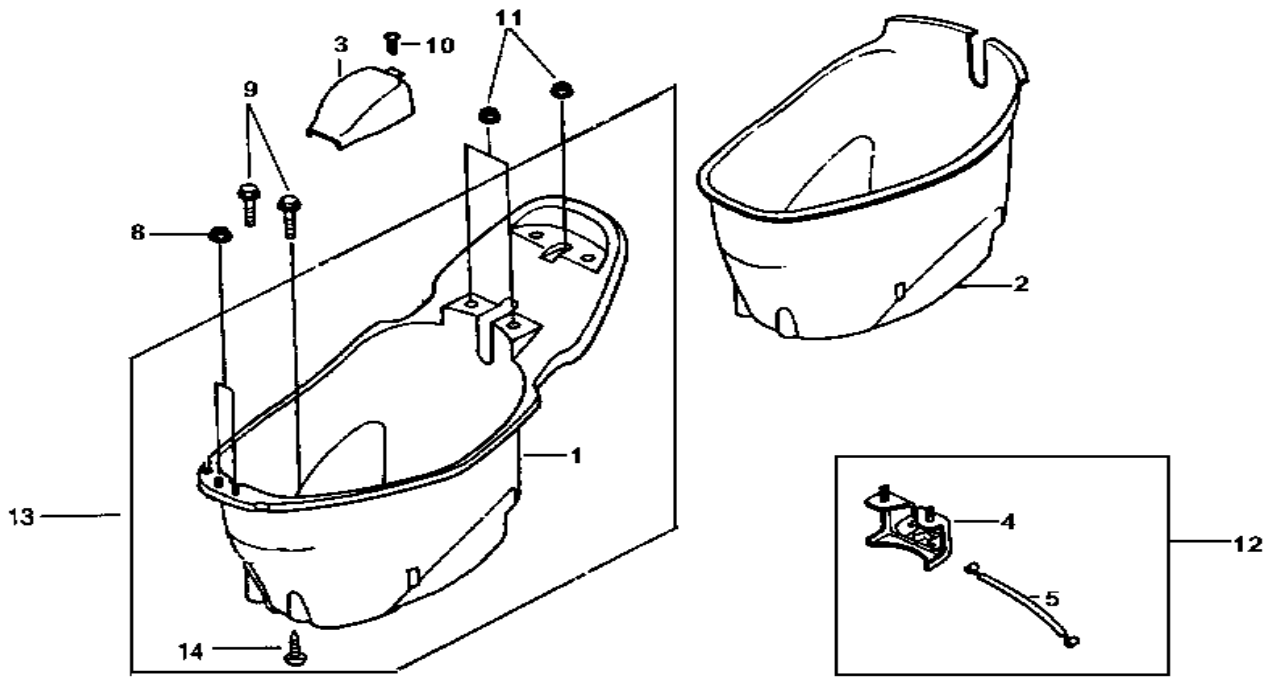
MODEL(S) A125Q2-2			A P P L Y	Q T Y R E Q
BLOCK NO. A-1		CHANGE DATE		
DESCRIPTION	PARTS NUMBER			
FR.cover lid assy (BU-283S)	6430G-M70-000-BJ			1
FR.cover lid assy (R-1543S)	6430G-M70-000-HY			1
FR.cover lid assy (BN-1516P)	6430G-M70-000-AE			1
4.FR.cover stay	64305-H12-000			1
5.Inner box (GY-426U)	64304-H17-001-GK			1
6.Lick key set nut	75581-H12-000			1
7.Inner box lock assy	77233-GY6-900			1
8.FR. Fender stay	50315-H12-000			1
9.Inner box lid (GY-426U)	64308-H12-010-GK			1
10.Flange bolt 6x12	95701-06012-08			2
11.Spring nut 4mm	90302-V02-000			7
12.Tapping screw 4×12	93903-24320			19
15.FR. Cover stripe(for BK/GN/P)	87124-M62-000-T1			1
FR. Cover stripe(for S)	87124-M62-000-T2			1
16.Inner box assy	6430A-M62-000-GK			1
	6430A-M62-010-GK			1
17.Flange bolt 6mm	90111-162-000B			2
18.Winker relay assy	38300-M34-010			1



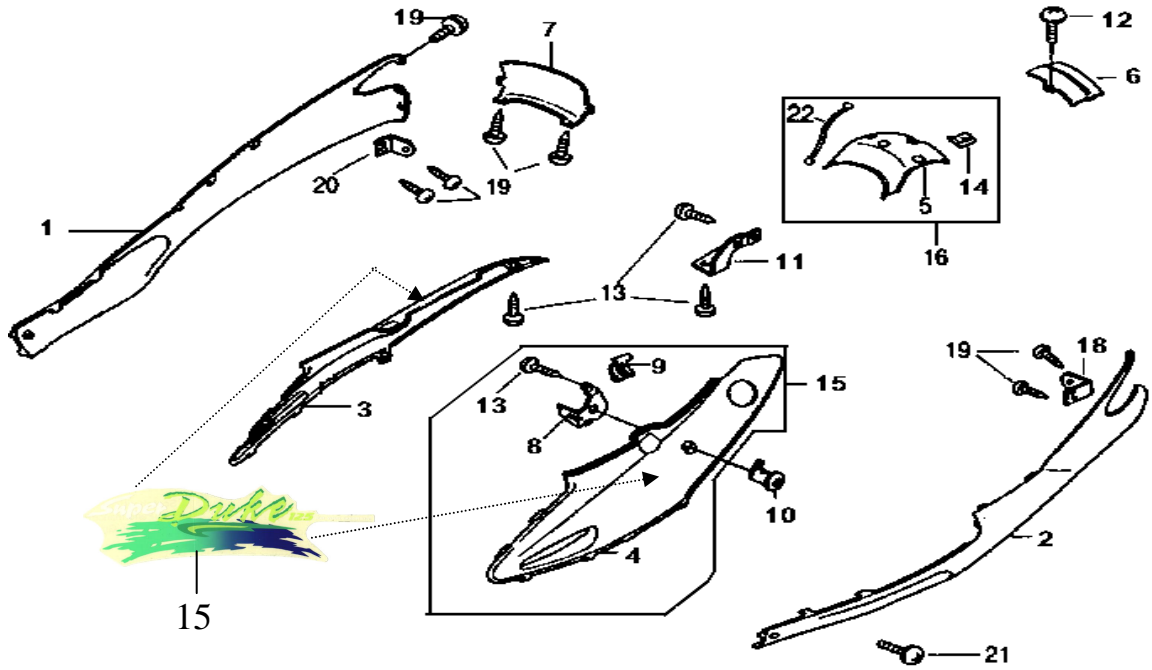
MODEL(S) A125Q2-2			A P P L Y	Q T Y R E Q
BLOCK NO. A-1	CHANGE DATE			
DESCRIPTION	PARTS NUMBER			
1.FR.inner fender a (BK-001U)	61101-H12-000-KA			1
2.FR.inner fender b (BK-001U)	61102-H12-000-KA			1
3.Al. duct clamper	18815-GY6-950			1
4.Flange bolt 6mm	90111-162-000B			2
5.Spring nut 4mm	90302-V02-000			4
6.Tapping screw 4x12	93903-24320			5



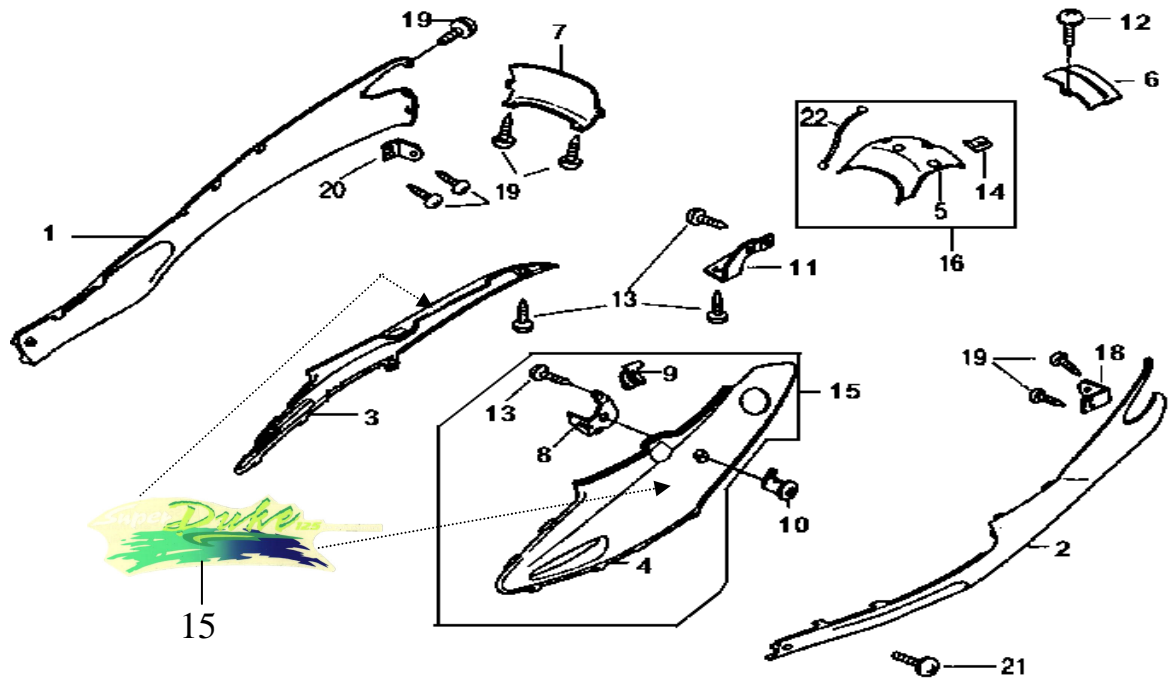
MODEL(S) A125Q2-2			A P P L Y	Q T Y R E Q
BLOCK NO. A-1		CHANGE DATE		
DESCRIPTION	PARTS NUMBER			
1.Battery cover (GY-426U)	50326-GY6-900-GK			1
2.Floor mat (GY-426U)	64320-H12-000-GK			1
3.Floor panel (GY-426U)	64310-H12-000-GK			1
4.R rnftc floor comp.	50620-M41-000			1
5.L rnftc floor comp.	50621-H12-000			1
6.Center cover (GY-426U)	80152-H12-000-GK			1
7.Tapping screw 5x12	93903-25320			3
8.Flange brlt 6mm	90111-147-000			4
9.Washer bolt 5x12	90302-GY6-900			2
10.Tapping screw 4x12	93903-24320			4
11.Clip nut 6mm	90305-KBN-902-M2			1
12.Helmet hook	81132-H12-000-GK			1
13.Gelmet hook bekt	77107-H12-000			1
14.Bolt 6x16	90115-G02-000			1
15.Flange nut 6mm	94050-06080			2
16.Flange bolt 6x12	95701-06012-08			2
17.Spring nut 4mm	90302-V02-000			4
18.Luggage stopper	81133-H12-000			1
19.Adjust hole cap	64313-H12-001			1



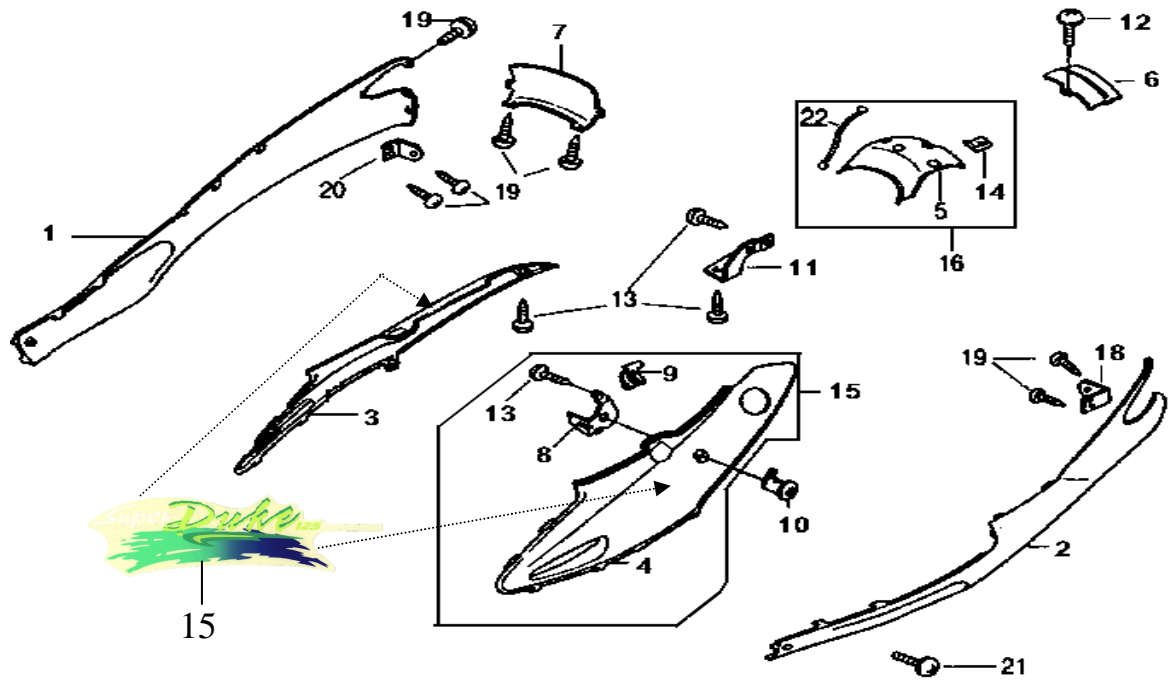
MODEL(S) A125Q2-2			A P P L Y	Q T Y R E Q
DESCRIPTION	PARTS NUMBER	CHANGE DATE		
2.Luggage box mat	83630-H12-000			1
8.Flange nut 6mm	94050-06000			1
9.Flange bolt 6mm	90111-162-000B			2
10.Special screw 6x17	90381-GZ5-000			2
11.Open stay nut 6mm	90301-693-000			1
12.Seat catch assy	7723A-M9Q-000			3
13.Luggage box assy	8126A-M62-900			1



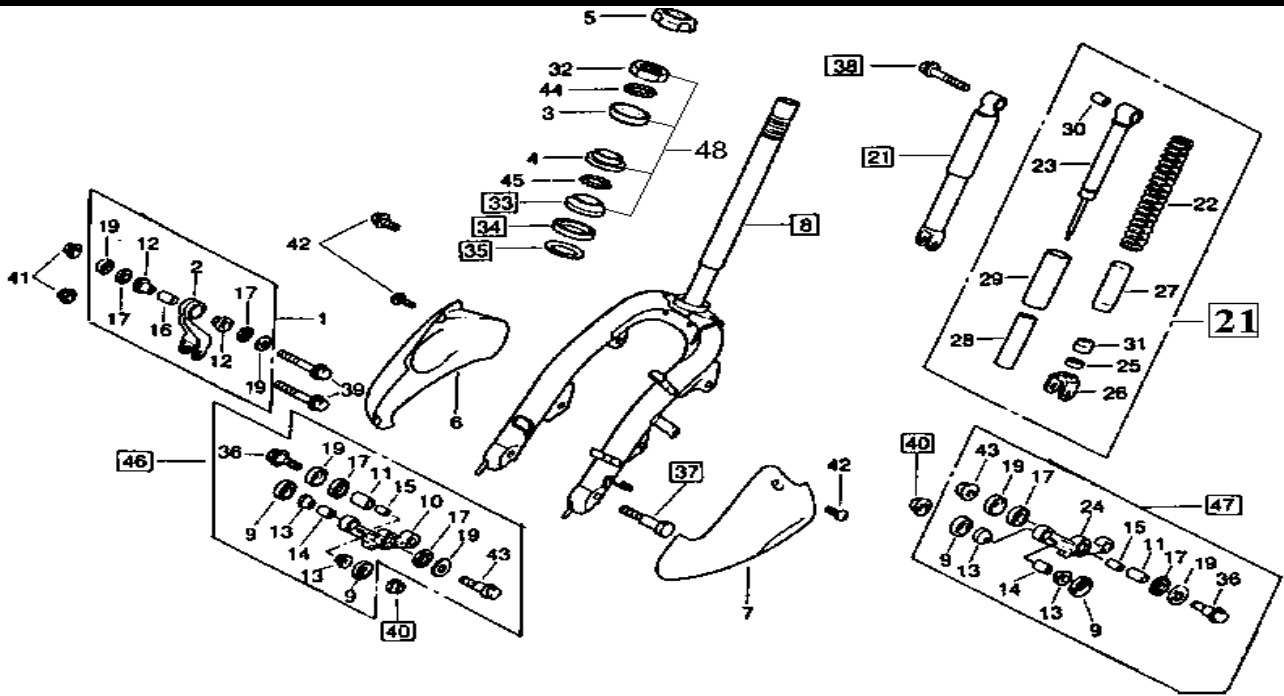
MODEL(S) A125Q2-2			A P P L Y	Q T Y R E Q
BLOCK NO. A-1		CHANGE DATE		
DESCRIPTION	PARTS NUMBER			
1.RH.side cover (<i>BK-001U</i>)	83501-H12-000-KA			1
RH.side cover (<i>P-3730U</i>)	83501-H12-000-LK			1
RH.side cover (<i>GN-5310U</i>)	83501-H12-000-NV			1
RH.side cover (<i>GY-423U</i>)	83501-H12-000-GA			1
RH.side cover (<i>GY-426U</i>)	83501-H12-000-GK			1
2.LH.side cover (<i>BK-001U</i>)	83601-H12-000-KA			1
LH.side cover (<i>P-3730U</i>)	83601-H12-000-LK			1
LH.side cover (<i>GN-5310U</i>)	83601-H12-000-NV			1
LH.side cover (<i>GY-423U</i>)	83601-H12-000-GA			1
LH.side cover (<i>GY-426U</i>)	83601-H12-000-GK			1
3.RH.body cover (<i>BK-005S</i>) BLACK	8350Z-M62-000-KQ			1
RH.body cover (<i>P-3850S</i>) PURPLE	8350Z-M62-000-LJ			1
RH.body cover (<i>GN-5310S</i>) GREEN	8350Z-M62-000-NU			1
RH.bosy cover (<i>S-880S</i>) SILVER	8350Z-M62-000-SQ			1
RH.body cover (<i>BU-4035S</i>) BULE	8350G-M70-000-CO *			1
RH.bosy cover (<i>S-880S</i>) SILVER	8350G-M70-000-SQ			1
RH.body cover (<i>BK-0406S</i>) BLACK	8350G-M70-000-KV			1
RH.bosy cover (<i>BU-283S</i>) BULE	8350G-M70-000-BJ			1
RH.body cover (<i>R-1543S</i>) RED	8350G-M70-000-HY			1
RH.bosy cover (<i>BN-1516P</i>) BROWM	8350G-M70-000-AE			1
4.LH.body cover (<i>BK-005S</i>) BLACK	8360Z-M62-000-KQ			1
LH.body cover (<i>P-3850S</i>) PURPLE	8360Z-M62-000-LJ			1



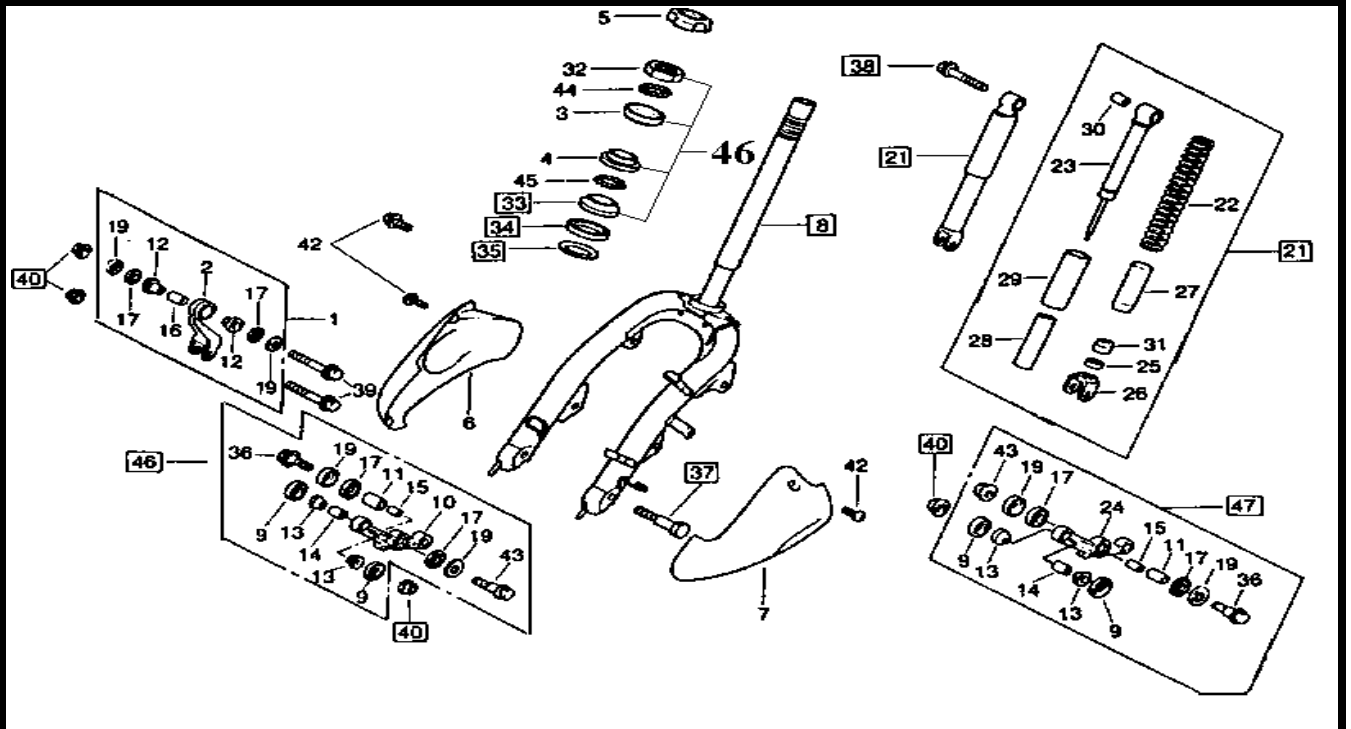
MODEL(S) A125Q2-2			A P P L Y	Q T Y R E Q
BLOCK NO. A-1		CHANGE DATE		
DESCRIPTION	PARTS NUMBER			
LH.body cover (<i>GN-5310S</i> GREEN	8360Z-M62-000-NU			1
LH.body cover (<i>S-880S</i>) SILVER	8360Z-M62-000-SQ			1
LH.body cover (<i>BU-4035S</i> , BULE	8360G-M70-000-CO *			1
LH.bosy cover (<i>S-880S</i>) SILVER	8360G-M70-000-SQ			1
LH.body cover (<i>BK-0406S</i>) BLACK	8360G-M70-000-KV			1
LH.bosy cover (<i>BU-283S</i>) BULE	8360G-M70-000-BJ			1
LH.body cover (<i>R-1543S</i>) RED	8360G-M70-000-HY			1
LH.bosy cover (<i>BN-1516P</i> , BROWM	8360G-M70-000-AE			1
5.RR.Ccnter up cover A(<i>BK-0</i> BLACK	8365A-M70-000-KQ	1999-12-02		1
RR.Ccnter up cover A (<i>P-38</i> PURPLE	8365A-M70-000-LJ	1999-12-02		1
RR.Ccnter up cover A(<i>GN-5</i> .GREEN	8365A-M70-000-NU	1999-12-02		1
RR.Ccnter up cover A (<i>S-88</i> SILVER	8365A-M70-000-SQ	1999-12-02		1
RR.Ccnter up cover A (<i>BU-4</i> BLUE	8365A-M70-000-CO *			1
RR.Ccnter up cover A(<i>BK-0</i> BLACK	8365A-M70-000-KV			1
RR.Ccnter up cover A (<i>BU-2</i> BLUE	8365A-M70-000-BJ			1
RR.Ccnter up cover A(<i>R-154</i> RED	8365A-M70-000-HY			1
RR.Ccnter up cover A (<i>BN-15</i> BROWM	8365A-M70-000-AE			1
6.RR.Ccnter up cover B(<i>BK-0</i> BLACK	83660-H12-000-KQ			1
RR.Ccnter up cover B (<i>P-38</i> PURPLE	83660-H12-000-LJ			1
RR.Ccnter up cover B(<i>GN-5</i> GREEN	83660-H12-000-NU			1
RR.Ccnter up cover B (<i>S-88</i> SILVER	83660-H12-000-SQ			1
RR.Ccnter up cover B (<i>BU-4</i> BLUE	83660-H12-000-CO *			1



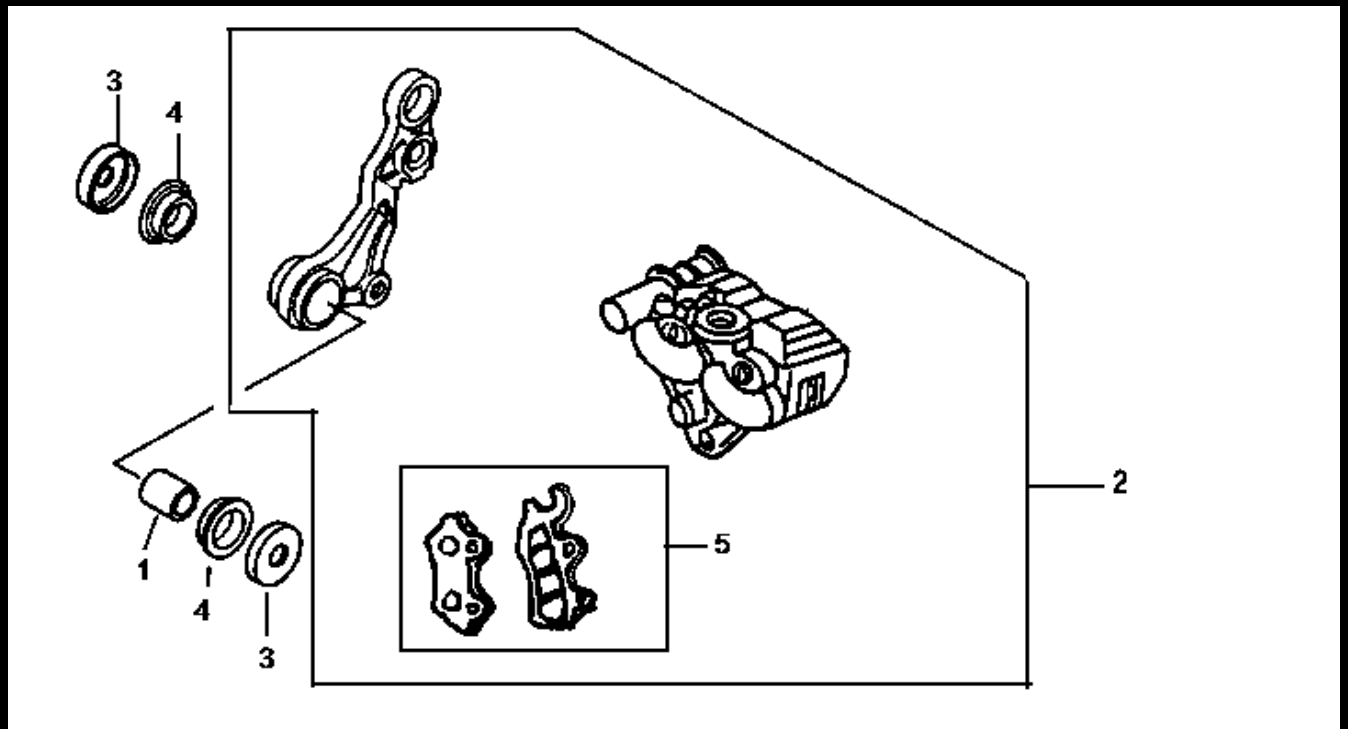
MODEL(S) A125Q2-2			A P P L Y	Q T Y R E Q
BLOCK NO. A-1		CHANGE DATE		
DESCRIPTION	PARTS NUMBER			
RR.Ccner up cover B (BK-0 BLACK	83660-H12-000-KV			1
RR.Ccner up cover B (BU-2 BLUE	83660-H12-000-BJ			1
RR.Ccner up cover B (R-15 RED	83660-H12-000-HY			1
RR.Ccner up cover B (BN- BROWN	83660-H12-000-AE			1
7.RR.cent.low. assy (BK-001U)	83751-H12-000-KA			1
RR.cent.low. assy (P-3730U)	83751-H12-000-LK			1
RR.cent.low. assy (GN-5310U)	83751-H12-000-NV			1
RR.cent.low. assy (GY-423U)	83751-H12-000-GA			1
RR.cent.low. assy (GY-426U)	83751-H12-000-GK			1
8.Seat lock stay	77232-H12-010			1
9.Set nut lock key	75581-M9Q-000			1
10.Seat lock	77239-GY6-003			1
11.Body cover conn.plate	83504-H12-010			1
12.Washer screw 5x14	90118-T15-000			3
14.Spring nut 5mm	90320-GC3-000			1
15.R.L.Body cover stripe (for BK/GN/P)	87126-M62-000-T1	1999-08-05		1
R.L.Body cover stripe (for S)	87126-M62-000-T2	1999-08-05		1
18.R.side cover stay	83505-H12-010			1
19.Tapping screw 4x12	93903-24310			12
20.L.side cover stay	83506-H12-010			1
21.Washer screw 5x16	93891-05016-07			2



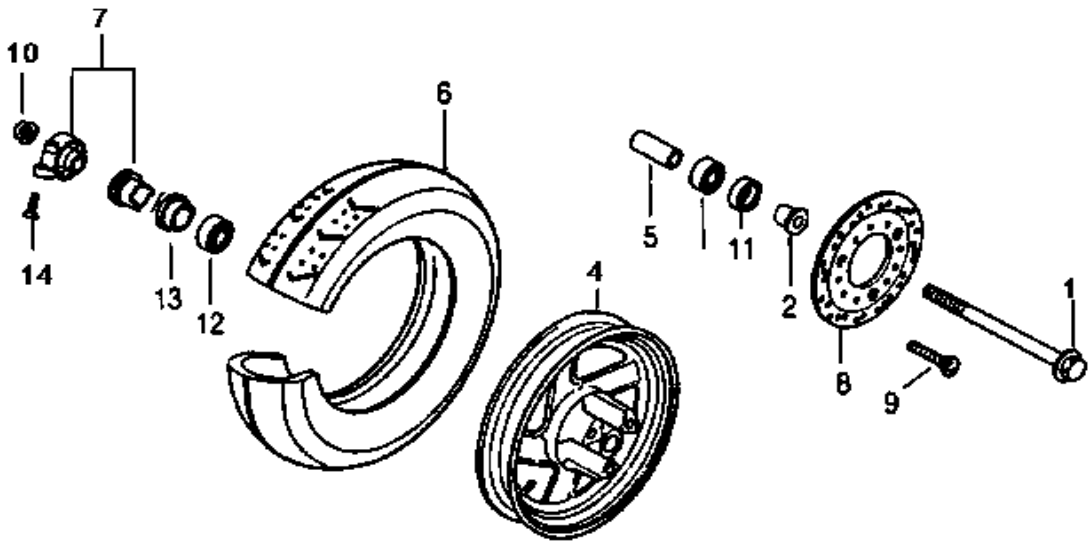
MODEL(S) A125Q2-2			A P P L Y	Q T Y R E Q
BLOCK NO. A-1		CHANGE DATE		
DESCRIPTION	PARTS NUMBER			
1.FR.brk. torque lind assy	4543A-H09-000			1
3.Race up strg ball	50301-M9Q-000			1
5.Strg stcm lock nut	50306-M9Q-000			1
6.R pivot arm cover (<i>BK-001U</i>)	5110A-H12-000-KA			1
R pivot arm cover (<i>P-3730U</i>)	5110A-H12-000-LK			1
R pivot arm cover (<i>GN-5310U</i>)	5110A-H12-000-NV			1
R pivot arm cover (<i>GY-423U</i>)	5110A-H12-000-GA			1
R pivot arm cover (<i>GY-426U</i>)	5110A-H12-000-GK			1
7.L pivot arm cover (<i>BK-001U</i>)	5120A-H12-000-KA			1
L pivot arm cover (<i>P-3730U</i>)	5120A-H12-000-LK			1
L pivot arm cover (<i>GN-5310U</i>)	5120A-H12-000-NV			1
L pivot arm cover (<i>GY-423U</i>)	5120A-H12-000-GA			1
L pivot arm cover (<i>GY-423U</i>)	5120A-H12-000-GK			1
8.Fr. fork comp	51105-H12-000			1
16.Collar torque link	51334-KV7-670			1
17.FR cush under dust seal	51335-001-000			6
21+46 R.arm assy	51350-H12-000			1
21+47 L arm assy	51450-H12-000			1
32.Race strg top cone	53211-M9Q-000			1
33.Race strg bot cone	53212-250-010			1
34.Dust seal strg head	53214-250-000			1
35.Strg head dust seal washer	53215-250-000			1



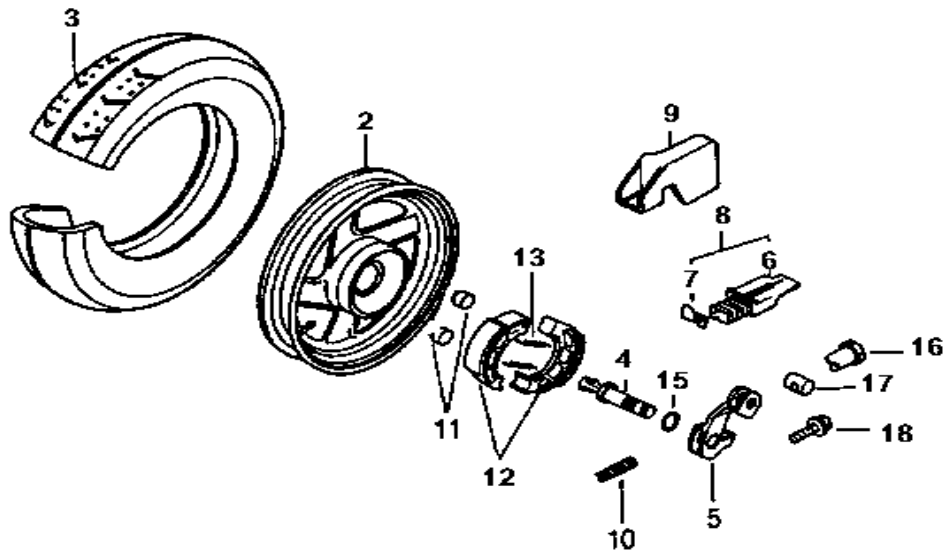
MODEL(S) A125Q2-2			A P P L Y	Q T Y R E Q
BLOCK NO. A-1	CHANGE DATE			
DESCRIPTION	PARTS NUMBER			
36.Bolt fr cush und	90104-KS4-000			2
37.Flange bolt 8x48	90111-GC3-000			2
38.Flange bolt 8x37	90118-471-000			2
39.Flange bolt 8x38	90118-GM9-741			2
40.Flange nut 8mm	90309-KF0-003			4
42.Flange bolt 6mm	90508-GC8-000			2
43.Nut hex 8mm	94002-GC8-000			2
44.Steel ball #5	96211-05000			26
45.Stell ball 8mm (1/4" BALL)	96211-08000			19
48.Ball race set	50300-KV7-000			1



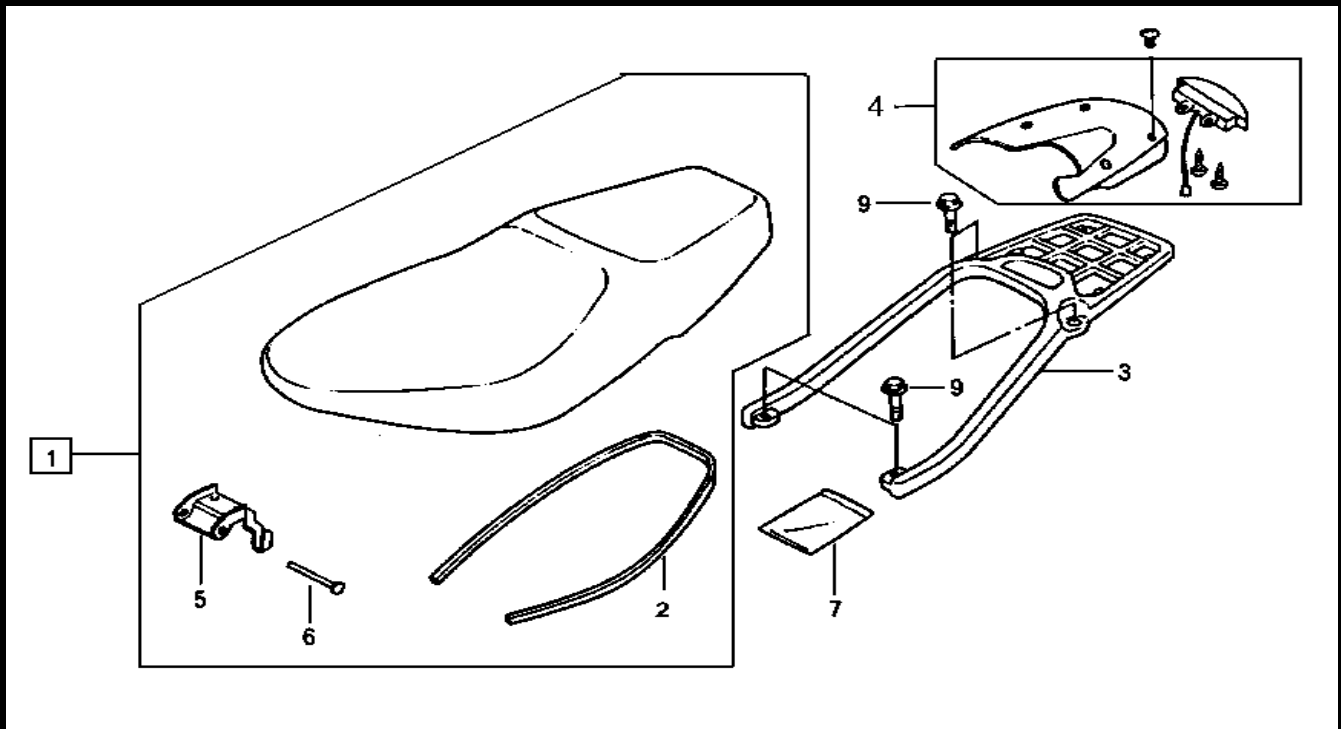
MODEL(S) A125Q2-2			A P P L Y	Q T Y R E Q
BLOCK NO. A-1	CHANGE DATE			
DESCRIPTION	PARTS NUMBER			
1.Front brake collar b	44313-GM9-710			1
2.L front calliper assy	45050-H13-000			1
3.Dust seal	45104-GM9-003			2
4.Front fork bush	45131-GM9-710			2
5.Pad	45105-H13-000-AC			1



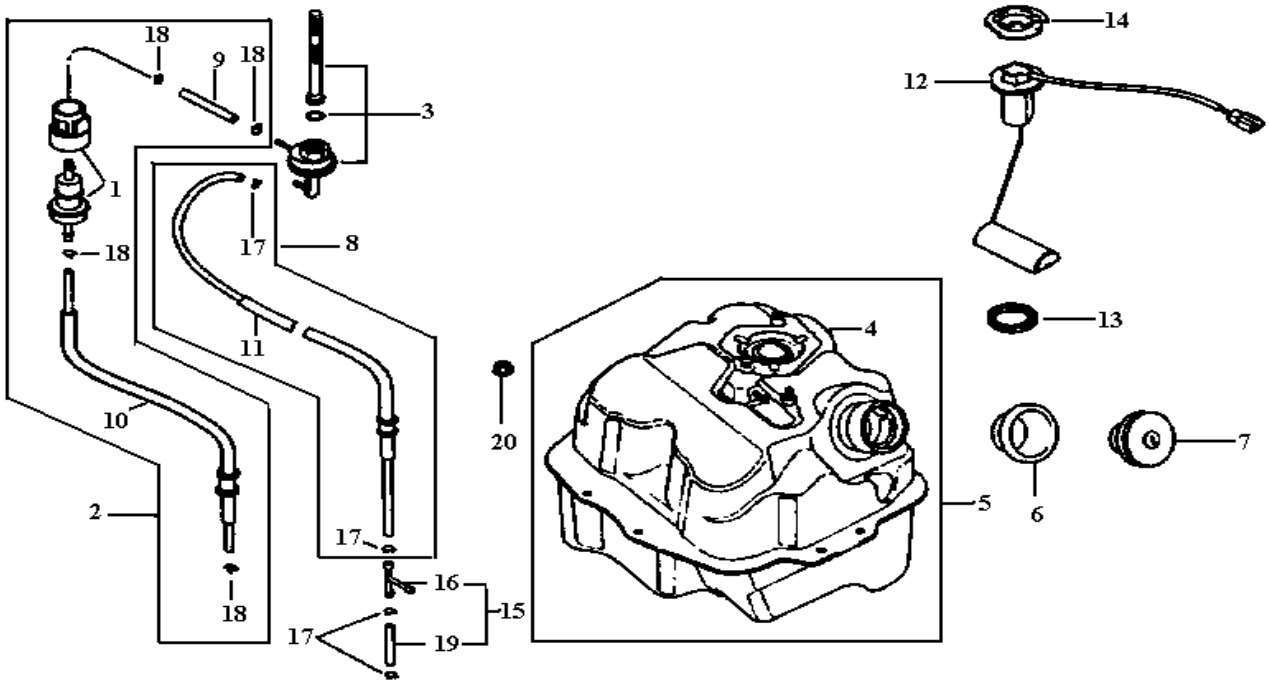
MODEL(S) A125Q2-2			A P P L Y	Q T Y R E Q
BLOCK NO. A-1		CHANGE DATE		
DESCRIPTION	PARTS NUMBER			
1.FR.axle wheel	44301-H09-000			1
2.Collar fr. wheel side	44311-H09-000			1
4.Wheel FR.Rim comp	44601-H09-020-GR			1
5.FR.axle distance collar	44620-H09-000			1
6.Tire	1T0135108-308	1999-11-24		1
7.Gear box assy	44800-GM9-711			1
8.Disk fr. brake	45121-M9Q-000			1
9.FR.disk bolt 8x24	90105-KR3-000			3
10.Nut u flange 12mm	90306-GW0-901-M1			1
11.Dust seal 20x32x5	90754-M9Q-000-M2			1
12.Radila ball brg. 6201 U	90912-M9Q-000-M1			2
13.Speedometer gear box seal	91258-KM1-004			1
14.Screw oral 5x18	93700-05018-0A			1



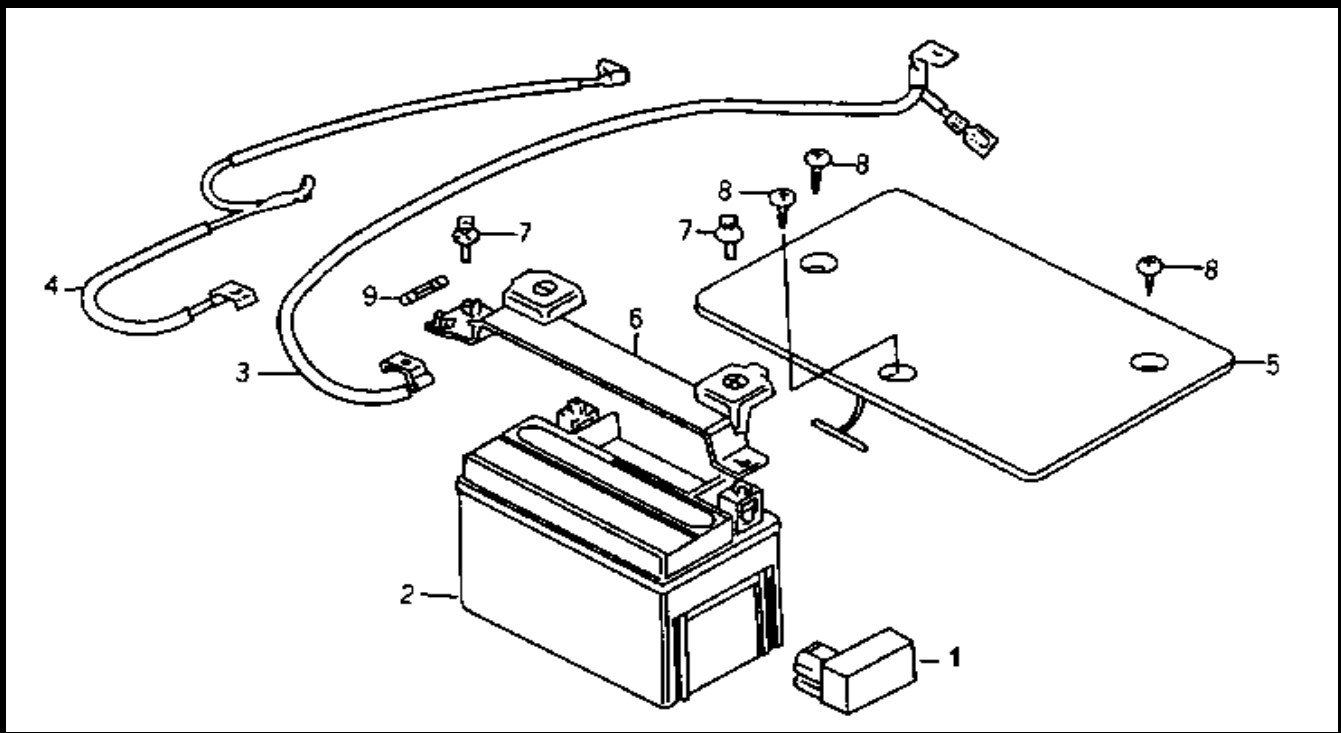
MODEL(S) A125Q2-2			A P P L Y	Q T Y R E Q
BLOCK NO. A-1	CHANGE DATE			
DESCRIPTION	PARTS NUMBER			
2.RR Wheel cast comp	42601-H09-020-GR			1
3.Tire	1T0135108-308	1999-11-24		1
4.RR.brk. cam	4314A-V02-000			1
5.RR.brk arm comp	43410-V02-900			1
8.RR.brk arm cover assy	43415-GY6-900			1
9.RR.brk arm guard	43416-GY6-900			1
10.Spg RR. brk arm	43472-V02-000			1
11.Stopper spg	43536-MG9-951-M1			1
12.Shoe comp fr brk	45120-E60-000	1999-06-25	Y	2
13.Brake shoe spg	45133-028-000			2
14.Flange nut 8mm	90309-KF0-003			4
15.O ring 11.3x1.3	91352-KG8-831			1
16.Brake arm joint B	95015-32001			1
17.Adj nut b	95015-42000			1
18.Flange bolt 6x32	95701-06032-00			1



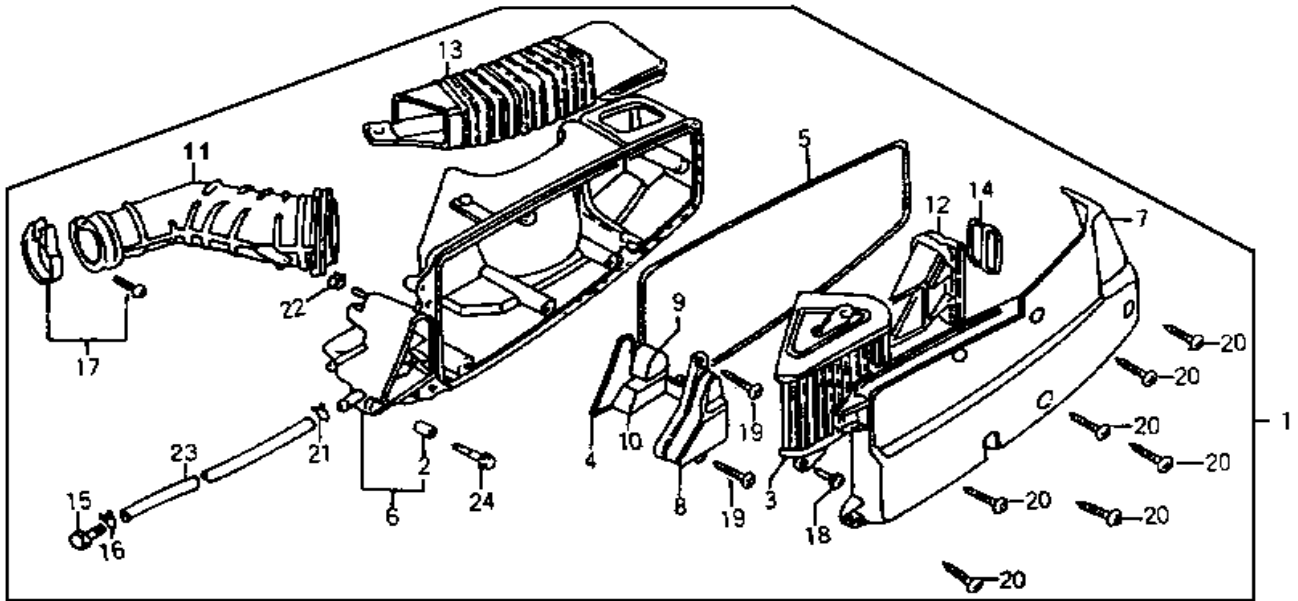
MODEL(S) A125Q2-2			A P P L Y	Q T Y R E Q
DESCRIPTION	PARTS NUMBER	CHANGE DATE		
1.Double seat assy	77100-H12-000			1
3.RR.carrier (<i>BK-005S</i>) BLACK	8120A-H12-000-KQ			1
RR.carrier (<i>P-3850S</i>) PURPLE	8120A-H12-000-LJ			1
RR.carrier (<i>GN-5310S</i>) GREEN	8120A-H12-000-NU			1
RR.carrier (<i>S-880S</i>) SILVER	8120A-H12-000-SQ			1
RR.carrier (<i>BU-4035S</i>) BLUE	8120A-H12-000-CO *			1
RR.carrier (<i>BK-0406S</i>) BLACK	8120A-H12-000-KV			1
RR.carrier (<i>BU-283S</i>) BLUE	8120A-H12-000-BJ			1
RR.carrier (<i>R-1543S</i>) RED	8120A-H12-000-HY			1
RR.carrier (<i>BN-1516P</i>) BROWN	8120A-H12-000-AE			1
4.RR. Carrier cover set (<i>BK-0</i> BLACK	8120B-H12-000-KQ			1
RR. Carrier cover set (<i>P-385</i> PURPLE	8120B-H12-000-LJ			1
RR. Carrier cover set (<i>GN-531</i> GREEN	8120B-H12-000-NU			1
RR.Carrier cover set (<i>S-880</i> SILVER	8120B-H12-000-SQ			1
RR. Carrier cover set (<i>BU-403</i> BLUE	81201-M70-000-CO *			1
RR.Carrier cover set (<i>BK-040</i> BLACK	81201-M70-000-KV			1
RR. Carrier cover set (<i>BU-283</i> BLUE	81201-M70-000-BJ			1
RR.Carrier cover set (<i>R-1543</i> RED	81201-M70-000-HY			1
RR. Carrier cover set (<i>BN-151</i> BROWN	81201-M70-000-AE			1
9.Flange bolt 6x12	95701-06012-08			4



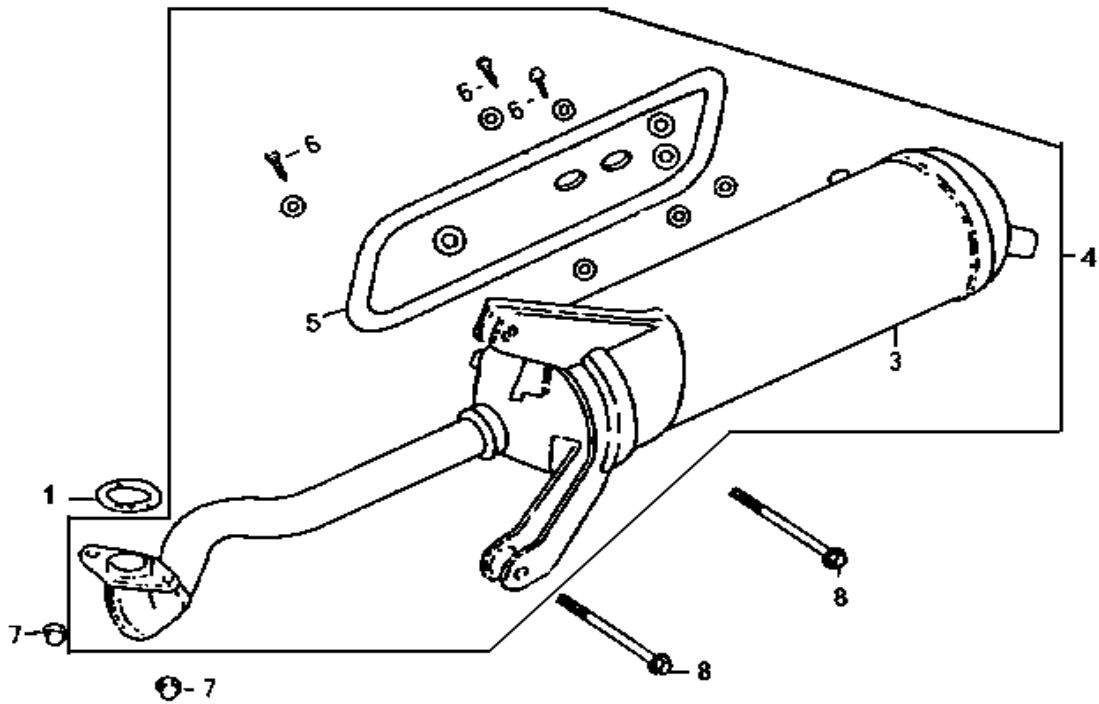
MODEL(S)			A	Q
A125Q2-2			P	T
	BLOCK NO. A-1		L	R
DESCRIPTION	PARTS NUMBER	CHANGE DATE	Y	E
2.Fuel strainer assy	1691A-V02-000			1
3.Fuel cock assy	16950-M9Q-000			1
4.Fuel tank comp	17500-M41-000			1
6.Fuel tank cap rubber	17509-H12-000			1
7.Fuel filler cap comp	17620-H12-000			1
8.Vaccum tube assy	1768A-V02-000			1
12.Fuel unit	37800-H12-010			1
13.Base packing	37801-GA7-700			1
14.Ret fuel unit	37802-GA7-700			1
15.3way joint assy	3877A-V02-000			1
17.Tube clip b7	95002-02070-00			4
18.Tube clip b8	95002-02080			4
20.Flange nut 6mm	94050-06080			2



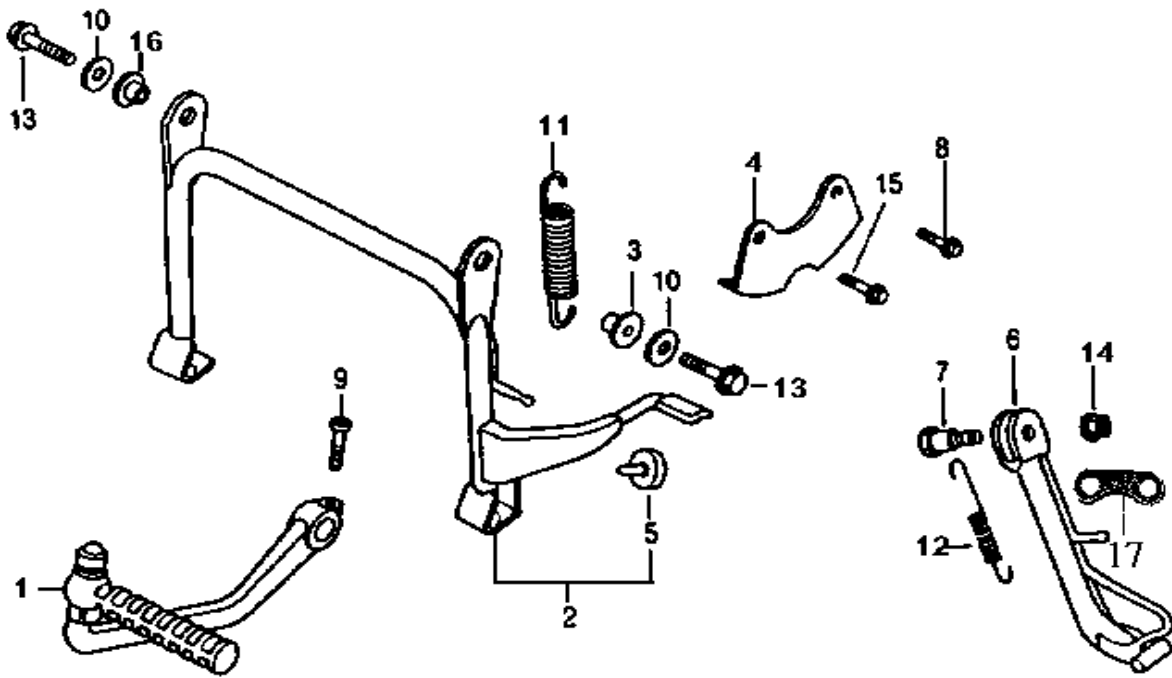
MODEL(S) A125Q2-2			A P P L Y	Q T Y R E Q
BLOCK NO. A-1	CHANGE DATE			
DESCRIPTION	PARTS NUMBER			
1.Cdi unit comp	30410-M70-000			1
2.Battery	1Y01GY601-Y			1
3.Cable battery	32411-M70-000			1
4.Cable earth	32412-GY6-920			1
5.Battery cover (<i>GY-426U</i>)	50326-GY6-900-GK			1
6.Battery band assy	5032A-V02-000			1
7.Washer bolt 5x12	90302-V02-000			2
8.Tapping screw 5x12	93903-25320			2
9.Fuse A (7A)	98200-10700			1



MODEL(S) A125Q2-2			A P P L Y	Q T Y R E Q
BLOCK NO. A-1		CHANGE DATE		
DESCRIPTION	PARTS NUMBER			
1.Air/c assy	1720A-M70-000			1
2.Collar air/c set	17208-GR1-010			2
3.Air/c element comp	17211-GY6-920			1
9.Filter breather	17234-GY6-900			1
10.Filter oil catch	17235-GY6-902			1
11.Air/c conn tube	17253-GY6-900			1
12.Duct air/c inlet	17255-GY6-900			1
13.Air/c case duct	17257-GY6-900			1
15.Plug breather tube	17370-419-700			1
16.Breather tube clip	17371-174-670			1
17.Band 48 air/c connecting tube	90652-GY6-900			1
18.Screw washer 5x10	93891-05010-00			2
19.Tapping screw 4x12	93903-24380			2
20.Tapping screw 5x20	93903-25480			7
22.Clip D10.5 tube	95002-41050-04			1
24.Flange bolt 6x28	90114-V02-000			2



MODEL(S) A125Q2-2			A P P L Y	Q T Y R E Q
BLOCK NO. A-1	CHANGE DATE			
DESCRIPTION	PARTS NUMBER			
1.Ex pipe gasket	18291-M70-010			1
	18292-GY1-610	2000-06-16	Y	1
4.Exh muffler assy	18000-M70-000			1
5.Muffler protector	18318-V02-800			1
6.Washer screw 6x10	90136-MC7-000			3
7.Cap nut (hex) 6M	90301-GY6-900			2



MODEL(S)
A125Q2-2

BLOCK NO. A-1

CHANGE
DATE

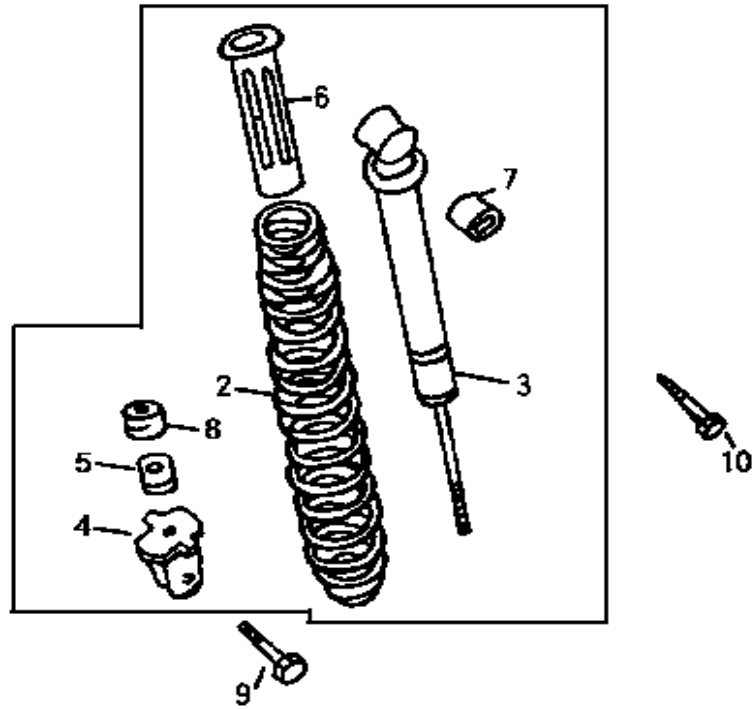
A
P
P
L
Y

Q
T
Y
R
E
Q

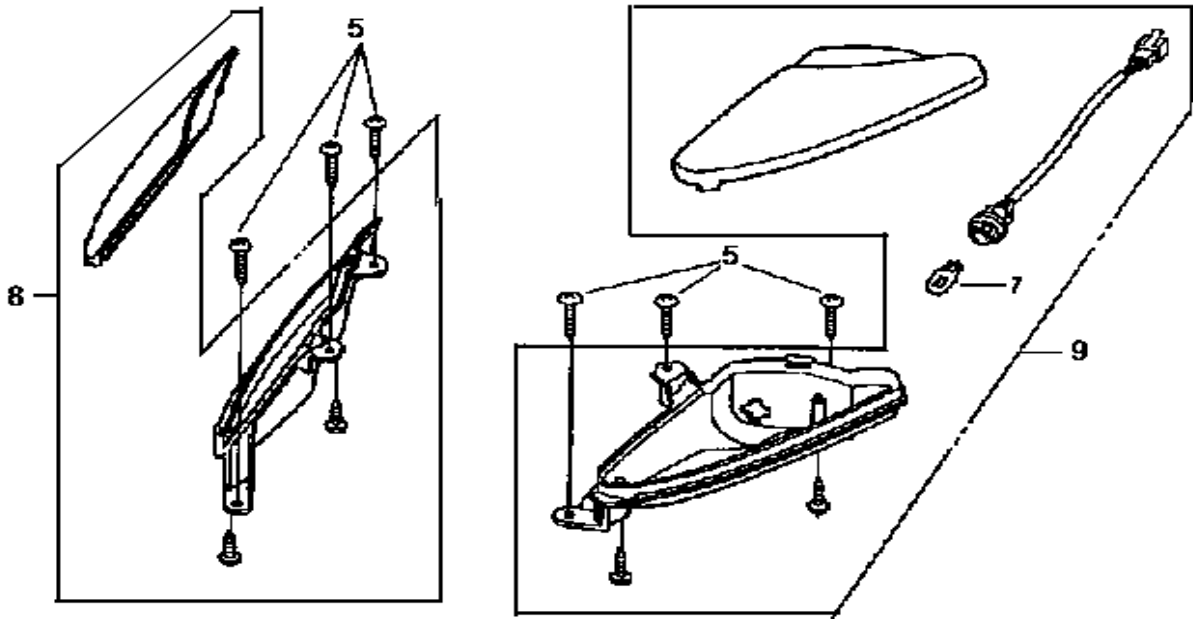
DESCRIPTION

PARTS NUMBER

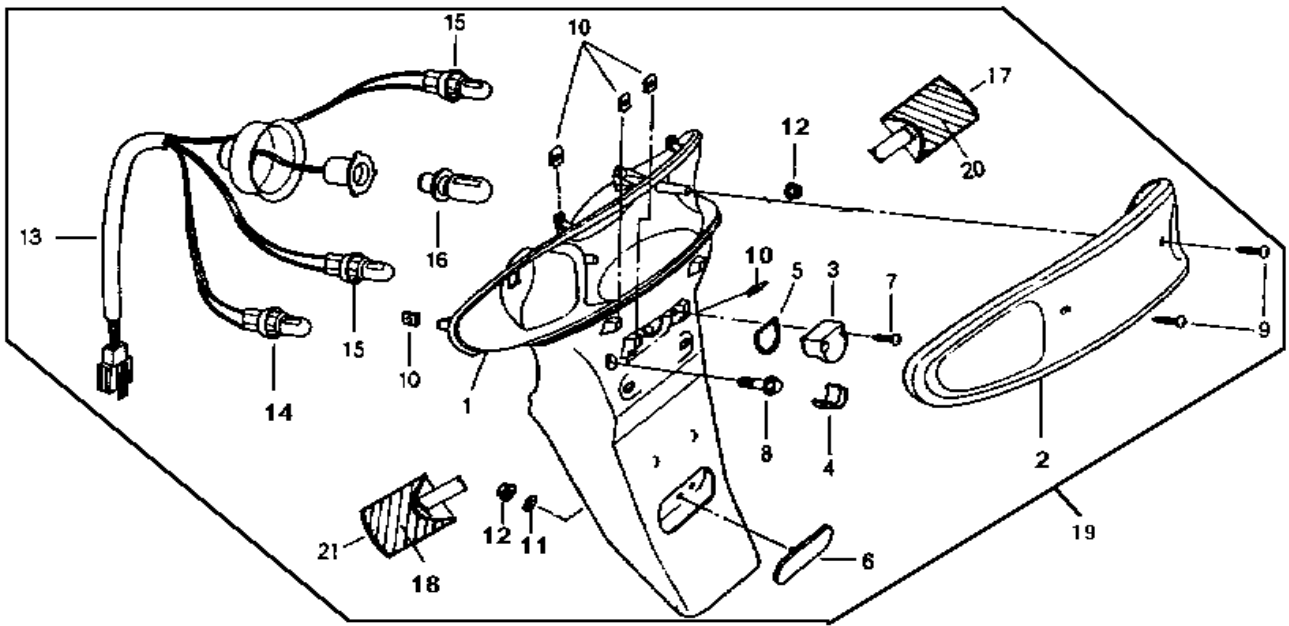
1.Kick starter arm assy	28300-GY6-900			1
2.Main stand ASSY.	5050A-H12-900			1
3.Main stand stopper collar	50502-GY6-900			2
4.Main stand stopper stay	50504-M62-000			1
5.Stand stopper bubber	50505-GY6-920			1
6.Side stand comp	50530-M70-000			1
7.Side stand screw	90108-G03-000			1
8.Flange bolt 6x50	96001-06050-00			1
9.Hex bolt 6x22	92201-06022-0G			1
10.Plain washer 10mm	94101-10700			2
11.Main stand spring	95014-71402			1
12.Side stand spring	95014-72204			1
14.Nut u glange 8mm	90309-KF0-003			1
15.Flange bolt 6x12	96001-06012-00			1
16.Main stand collar	50503-GY6-900			1
17.Spring plate hook	50542-M70-000	1999-12-07		1



MODEL(S) A125Q2-2			A P P L Y	Q T Y R E Q
BLOCK NO. A-1 DESCRIPTION	PARTS NUMBER	CHANGE DATE		
1.RR. cushion assy	52400-M70-000			1
9.Hex bolt 8x38	93201-08032-0A			1
10.Flange bolt 10x35	95801-10035-08			1



MODEL(S) A125Q2-2			A P P L Y	Q T Y R E Q
BLOCK NO. A-1	CHANGE DATE			
DESCRIPTION	PARTS NUMBER			
5.Tapping screw 4x12	93903-24320			6
7.Bulb position lamp (12V/3.4W)	34903-GY6-631			2
8.Rh.position lens assy	33140-M70-000			1
9.Lh.position lens assy	33240-M70-000			1



MODEL(S)
A125Q2-2

BLOCK NO. A-1

CHANGE
DATE

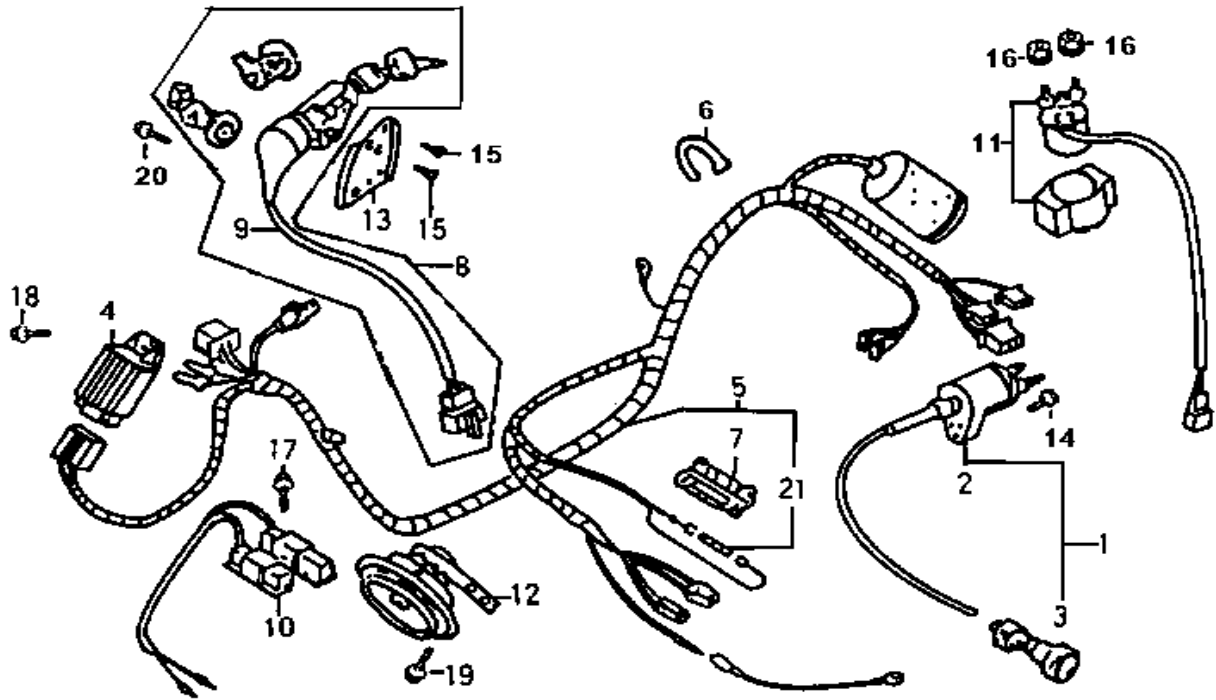
A
P
P
L
Y

Q
T
Y
R
E
Q

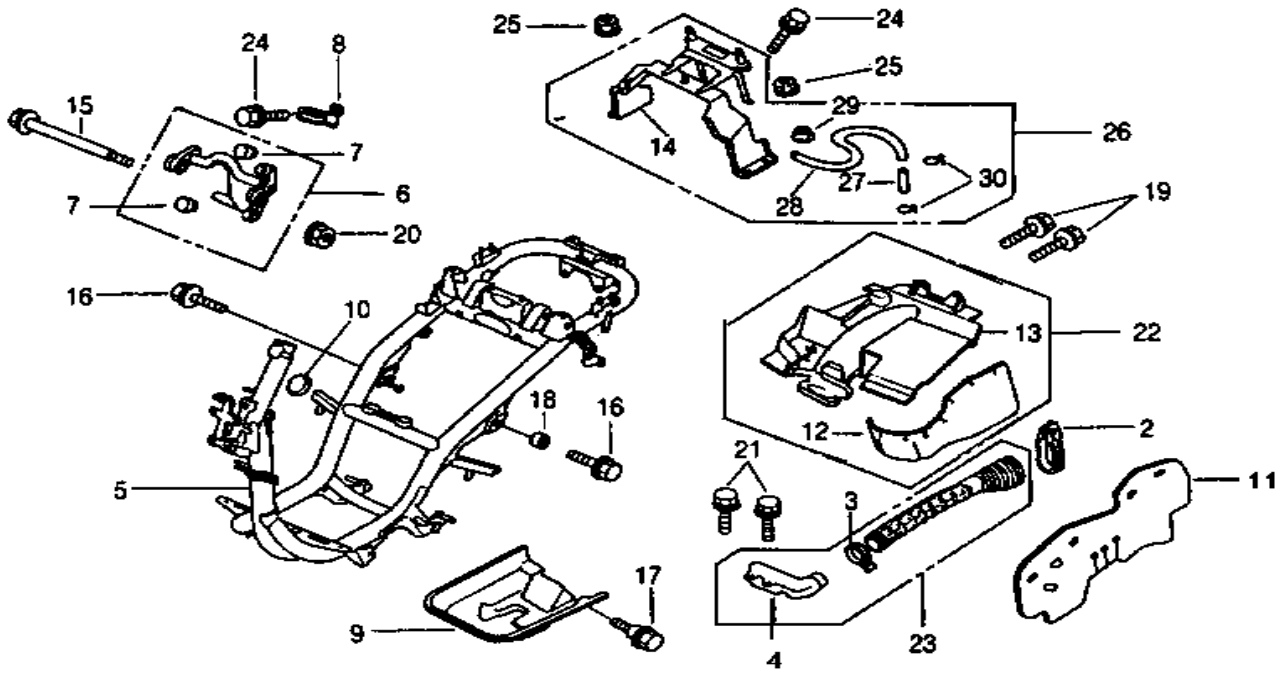
DESCRIPTION

PARTS NUMBER

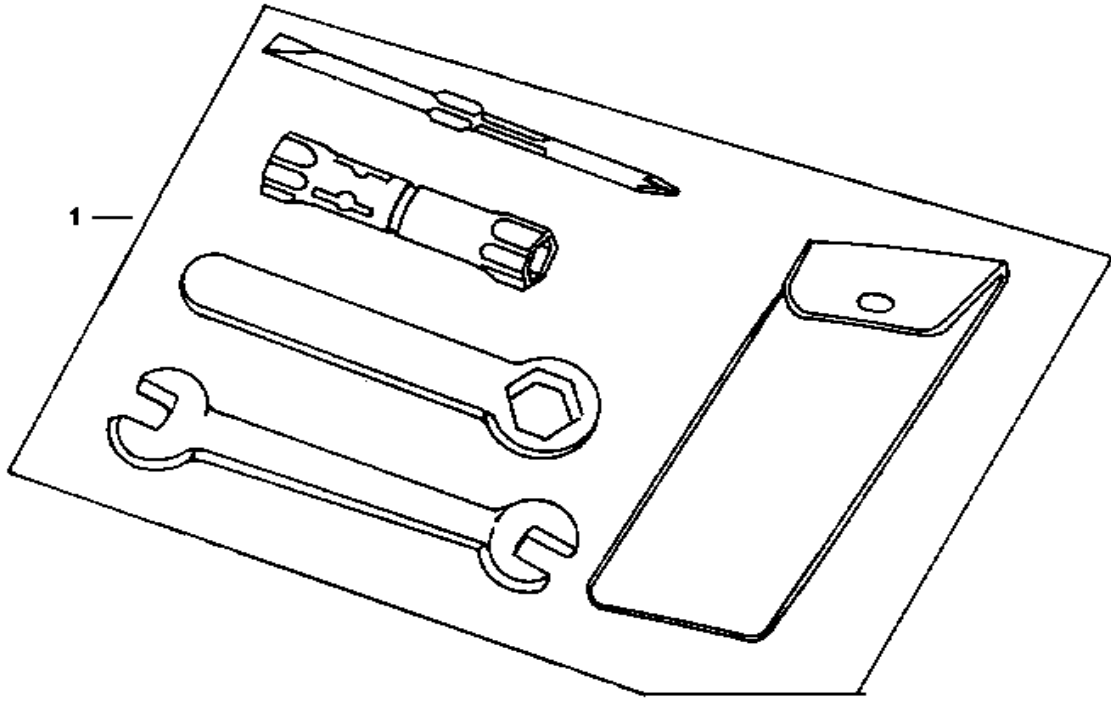
2.Tail light lens comp	33702-M70-000			1
6.Reflex feffector	33741-P1A-000			1
8.Flange bolt 6mm	90111-162-000B			2
12.Flange nut 6mm	94050-06080			1
14.Bulb,winker (12V-10W)	34905-GM9-003			1
15.Bulb,wedge base (12V-3.4W)	34908-GA7-701			1
16.Bulb,tail light (12V-5W)	34906-268-600			1
17.RR.R.winker assy	33600-M70-000			1
18.RR.L.winker assy	33650-M70-000			1
19.RR.comb.light assy	33700-M70-010			1
20.RR.R.winker lens (E-mark)	33602-M70-000			1
21.RR.L.winker lens (E-mark)	33652-M70-000			1



MODEL(S) A125Q2-2			A P P L Y	Q T Y R E Q
BLOCK NO. A-1		CHANGE DATE		
DESCRIPTION	PARTS NUMBER			
2.Ign.coil comp	30510-GY6-900			1
3.Cap assy noise suppresor	30700-GY6-000			1
4.REG.REC.comp.	31600-KBN-920			1
5.Harness wire	32100-M62-000			1
8.Key set	35010-M70-010			1
	35010-M70-010	1999-12-21	N	1
9.SW.assy comb. & lock	35100-H12-000			1
10.Resistor comp	35400-H08-000			1
11.Set start mag	35850-M70-000			1
12.Horn comp	38110-T54-000			1
13.Plate handle lock	53129-H12-000			1
14.Bolt hex 5x20	92101-05020-0A			1
15.Screw plat U nut	90164-028-000			2
16.Flange nut 6mm	94050-06080			2
17.Flange bolt 6x12	95701-06012-00			2
18.Flange bolt 6x16	95701-06016-00			2
19.Flange bolt 6x12	95701-08012-00			1
20.Flange bolt 6x16	95701-08016-00			2
21.Fuse A (7A)	98200-10700			1



MODEL(S)			A	Q
A125Q2-2			P <td>T </td>	T
	BLOCK NO. A-1		L <td>R </td>	R
		CHANGE	Y <td>E </td>	E
		DATE		Q
DESCRIPTION	PARTS NUMBER			
2.L cover duct band	11346-M9Q-000			1
4.Air/c chamber	19400-GY6-000			1
5.Frame body comp.	50100-M70-011			1
6.Eng.hanger assy	5035A-M70-000			1
9.Under cover	50613-M9Q-000			1
10.Pipe end cap	64307-M9Q-800			1
11.Splash board plate	80102-M9Q-000			1
14.Luggage box brkt	81270-H12-010			1
15.Flange bolt 10x184	90105-GY6-900			1
16.Flange bolt 10x35	90106-GY6-900			2
17.Flange bolt 6mm	90111-162-000B			4
18.Collab distance	90121-GY6-900			1
19.Flange bolt 6x12	95701-06012-08			2
20.Nut u Flange 10mm	90304-GW0-901-M1			1
21.Tapping screw 5x16	93903-25320			2
22.RR.inner fender assy	8010A-H12-000			1
23.Air chamber assy	1940A-V02-000			1
24.Flange bolt 6x12	95701-06012-08			3
25.Flange nut 6mm	94050-06080			4
26.Luggage box brkt assy	8127A-H12-000			1
28.Breather pipe comp.	17550-H12-010			1
29.Flange nut 5mm	94050-05080			1
30.Tube clip B8	95002-02080			2



MODEL(S) A125Q2-2			A P P L Y	Q T Y R E Q
DESCRIPTION	PARTS NUMBER	CHANGE DATE		
1.Tool set	89010-GY6-900			1